

UNITED
TECHNOLOGIES
CARRIER
TRANSCOLD

EUROPEAN
TRANSCONTINENTAL
OPERATIONS
CARRIER TRANSCOLD INDUSTRIES S.A.
BOITE POSTALE 16
FRANQUEVILLE SAINT PIERRE
FRANCE
76520 BOOS
R.C. ROUEN B 410 041 677

THIS DOCUMENT IS THE PROPERTY OF CARRIER CORPORATION
AND IS DELIVERED UPON THE EXPRESS CONDITION THAT THE
CONTENTS WILL NOT BE DISCLOSED OR USED WITHOUT CARRIER
CORPORATION'S WRITTEN CONSENT.

SUBMISSION OF THESE DRAWINGS OR DOCUMENTS
DOES NOT CONSTITUTE PART PERFORMANCE OR
ACCEPTANCE OF CONTRACT

NEOS 100S



WARNING

READ ALL NOTES PRIOR TO INSTALLATION

UNIT MODEL	EVAPORATOR MODEL	REFRIGERANT CHARGE	CPR SETTING	GAS
NEOS 100S	MNS 600	1.0 kg±0.1 [2.2 lb]	0.7 bar±0.1 [10.3 psi]	R-134A

NOTES:

1- TRUCK BODY

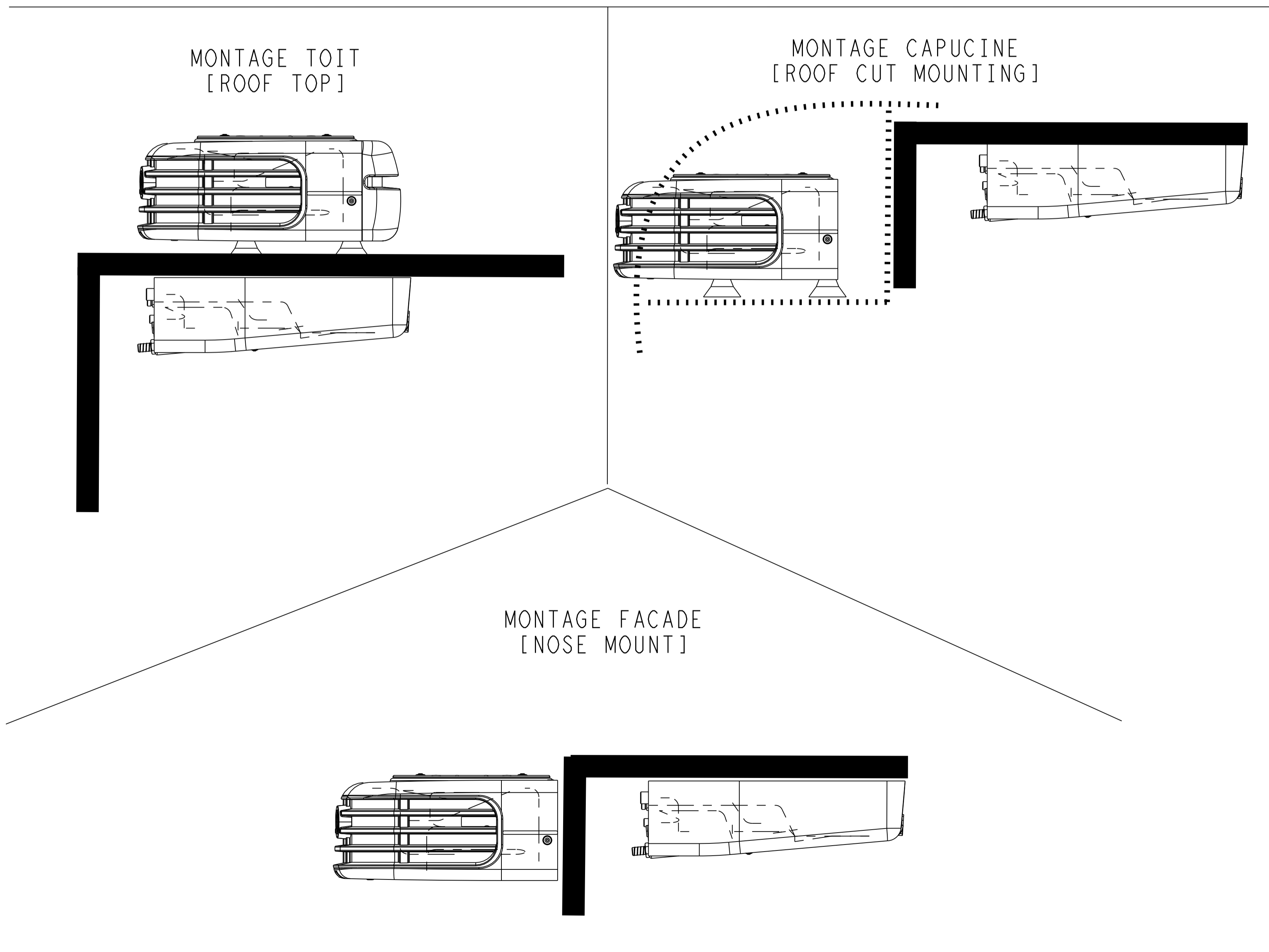
- 1.1- THE TRUCK STRUCTURE MUST BE EVALUATED BY THE TRUCK MANUFACTURER TO DETERMINE ITS ABILITY TO WITHSTAND THE LOADS IMPOSED BY THE UNIT OVER ITS SERVICE LIFE. CARRIER TRANSCOLD DOES NOT CONVEY ANY ENDORSEMENT OR WARRANTY FOR THE TRUCK'S STRUCTURAL INTEGRITY.
- 1.2 -UNIT MOUNTING SURFACES OF THE TRUCK THAT CONTACT THE UNIT MOUNTING PADS MUST BE UNI-PLANAR TO WITHIN 3 mm [0.12] TO PREVENT DISTORTION OF THE UNIT AND/OR TRUCK.

2- INSTALLATION

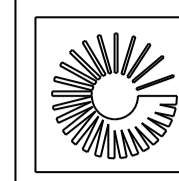
- 2.1- THIS REFRIGERATION UNIT HAS BEEN DESIGNED WITH THE SAFETY OF THE MECANICIAN IN MIND. DURING NORMAL OPERATION, ALL MOVING PARTS ARE FULLY ENCLOSED TO PREVENT INJURY. DURING ALL PRE-TRIP INSPECTIONS, DAILY INSPECTIONS AND PROBLEM TROUBLESHOOTING, YOU MAY BE EXPOSED TO MOVING PARTS. WE ADVISE YOU TO TAKE ALL REQUIRED PRECAUTIONS GENERAL AND TO WEAR ADEQUATE PROTECTIVE EQUIPMENT (SAFETY GLASSES, GLOVES, SAFETY SHOES) DURING INSTALLATION AND ALL REPAIRS AND MAINTENANCE SERVICES ON THE UNIT.
- 2.2- TAKE EVERY SAFETY MEASURE WHEN ACCESING THE UNIT, USE STANDARDS LADDERS, WORKING PLATFORM WITH RAILING, SAVETY BELT.
- 2.3- UNITS ARE DELIVERED UNDER PRESSURE WITH NITROGEN. PLEASE BE SURE THAT THE CIRCUIT IS STILL UNDER PRESSURE (IT MEANS THAT THERE IS NO LEAK).
- 2.4- INSTALLATION AND COMMISSIONING PROCEDURE WILL DESCRIBED ON ELECTRONIC TECHNICAL MANUAL "MODULE INSTALLATION" AVAILABLE FROM WEBSITES.

3- SERVICE

- 3.1- IT IS IMPORTANT FOR THE SAFETY AND UPKEEP OF THE REFRIGERATION UNIT THAT SERVICING IS PERIODICALLY PERFORMED ACCORDING TO THE FREQUENCY INDICATED BY THE MANUFACTURED (SEE SERVICE MANUAL), SERVICE OPERATIONS AND REPAIRS MUST BE CARRIED OUT BY APPROVED CARRIER SERVICE STATION.
- 3.2- [ETO ONLY]
GOLDEN COLD SERVICE CONTRACTS : THE PROOF OF OUR COMMITMENT TO YOUR PROFITABILITY
WITH A CHOISE OF CONTRACTS : FULL SERVICE / ROUTINE MAINTENANCE / EXTENDED WARRANTY.



SHEET INDEX	REV	-	-
	SHEET	1	2



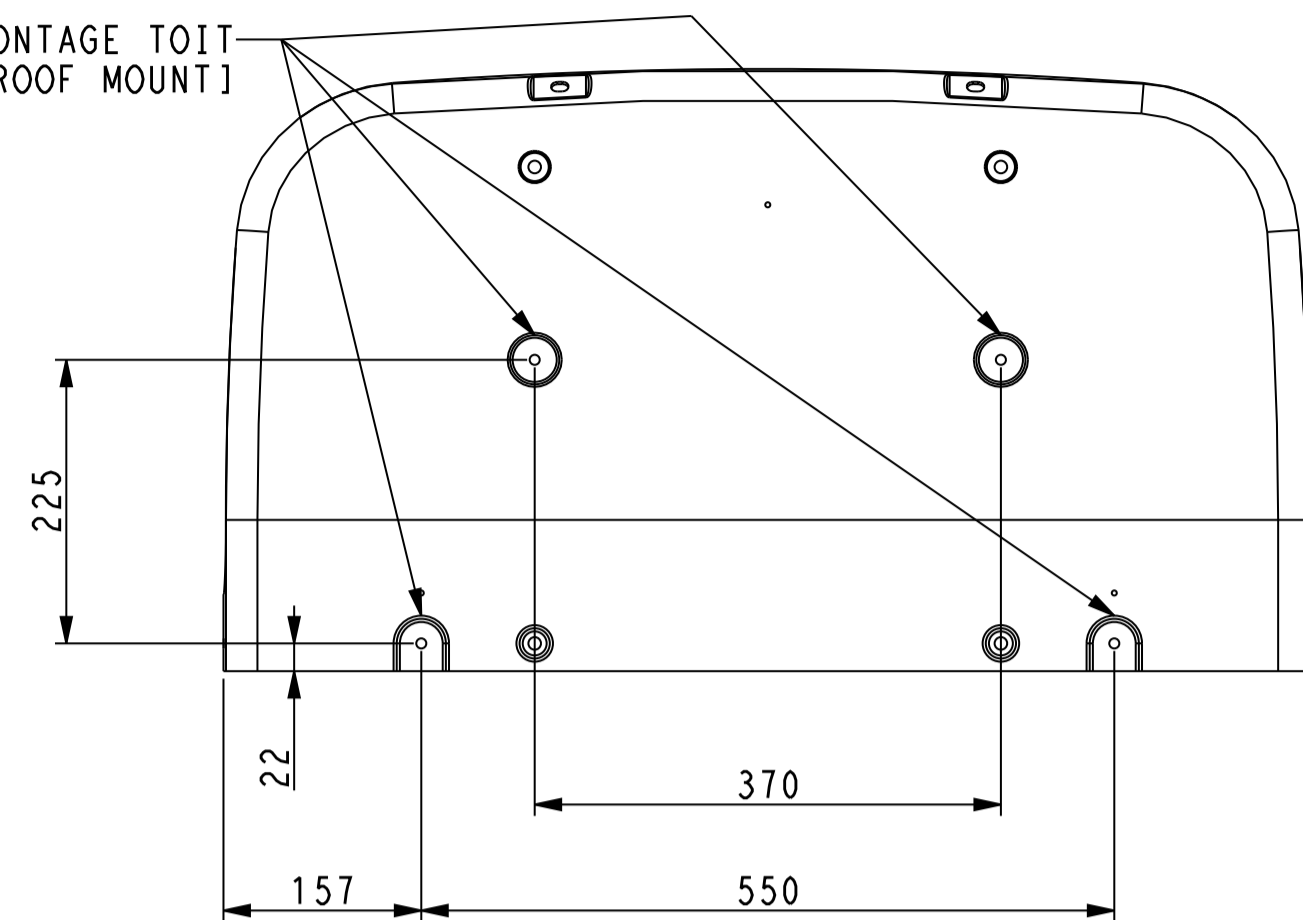
UNITED
TECHNOLOGIES
CARRIER
TRANSICOLD

EUROPEAN
TRANSCONTINENTAL
OPERATIONS
CARRIER TRANSICOLD INDUSTRIES S.A.
BOITE POSTALE 16
FRANQUEVILLE SAINT PIERRE
FRANCE
76520 BOOS
R.C. ROUEN B 410 041 677

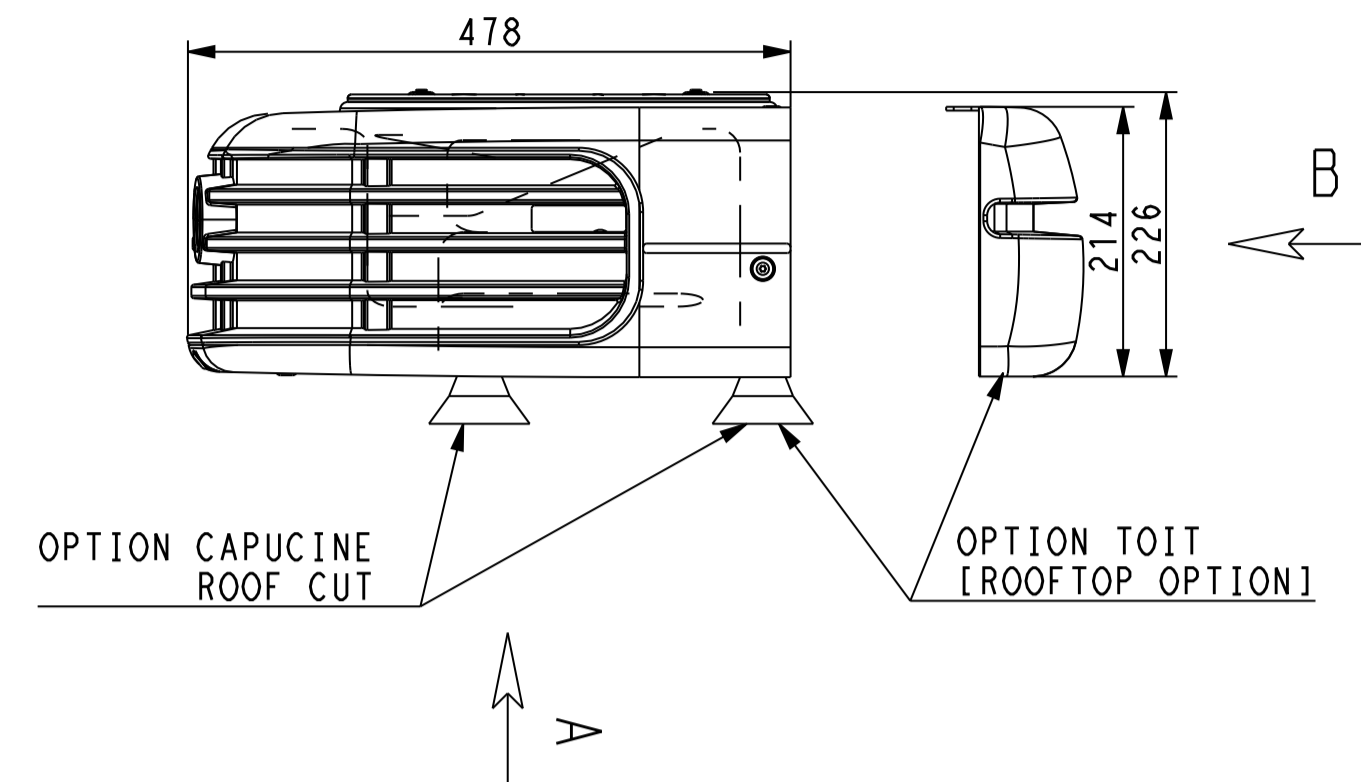
THIS DOCUMENT IS THE PROPERTY OF CARRIER CORPORATION
AND IS DELIVERED UPON THE EXPRESS CONDITION THAT THE
CONTENTS WILL NOT BE DISCLOSED OR USED WITHOUT CARRIER
CORPORATION'S WRITTEN CONSENT.

SUBMISSION OF THESE DRAWINGS OR DOCUMENTS
DOES NOT CONSTITUTE PART PERFORMANCE OR
ACCEPTANCE OF CONTRACT

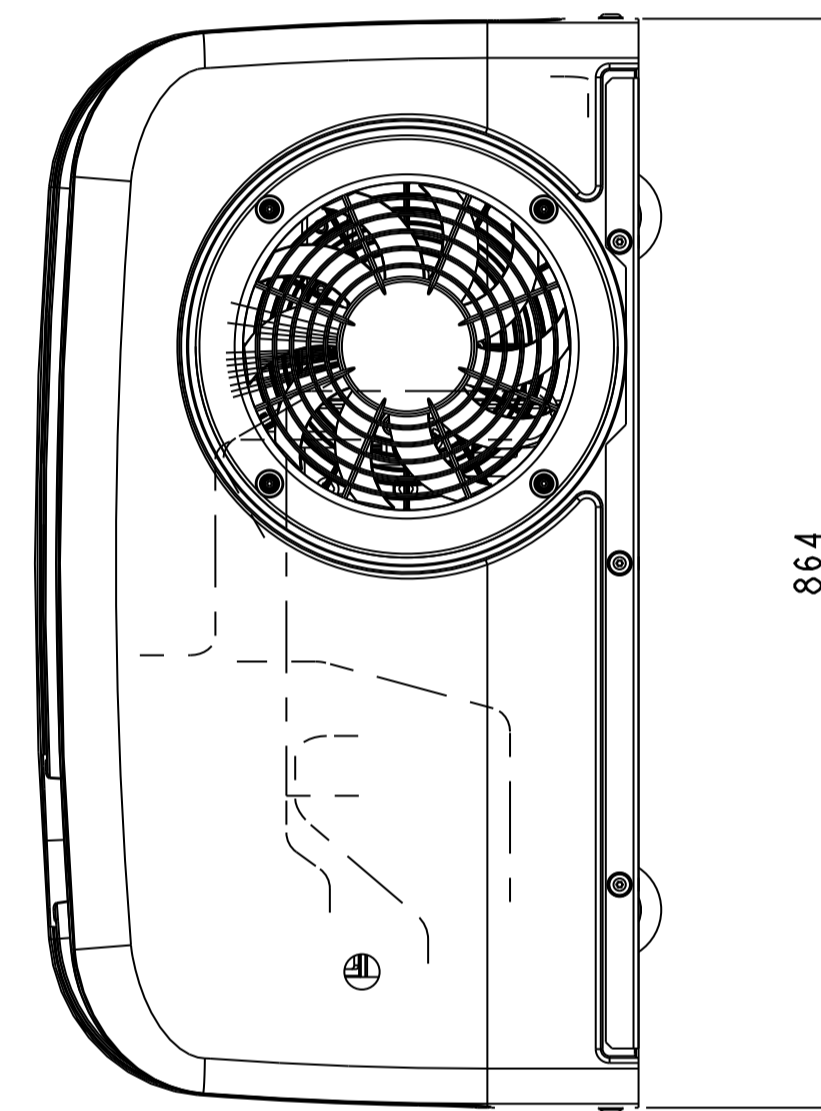
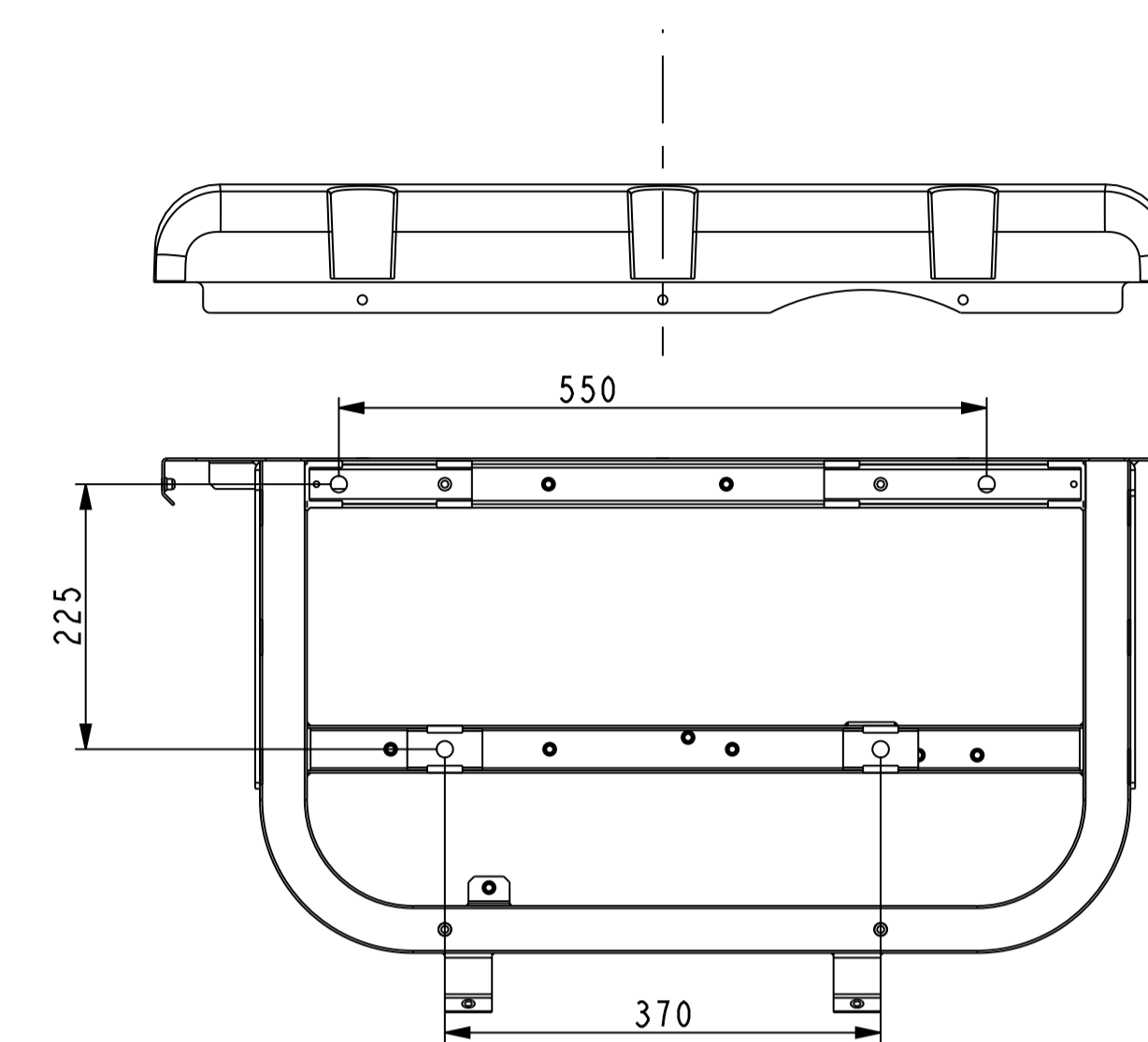
PERÇAGE DIA. 33 POUR MONTAGE TOIT
[DRILL Ø1.3 FOR ROOF MOUNT]



BOTTOM PANEL
ROOFMOUNT PREPARATION

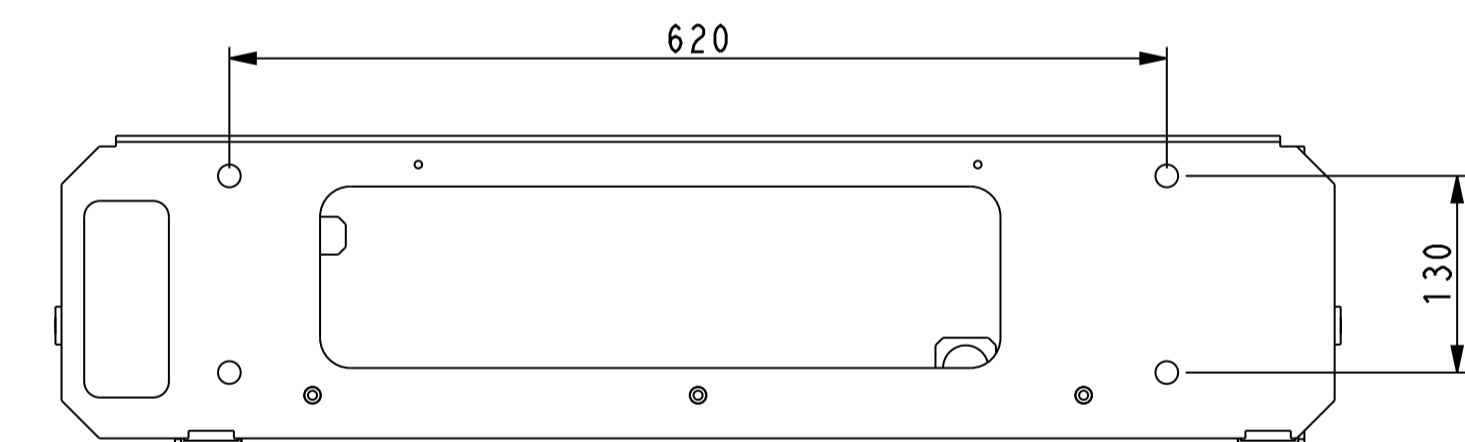


VUE SUIVANT A FIXATION DU CONDENSEUR PAR LE DESSOUS
[VIEW FOLLOWING A CONDENSER FIXATION BY THE BOTTOM]

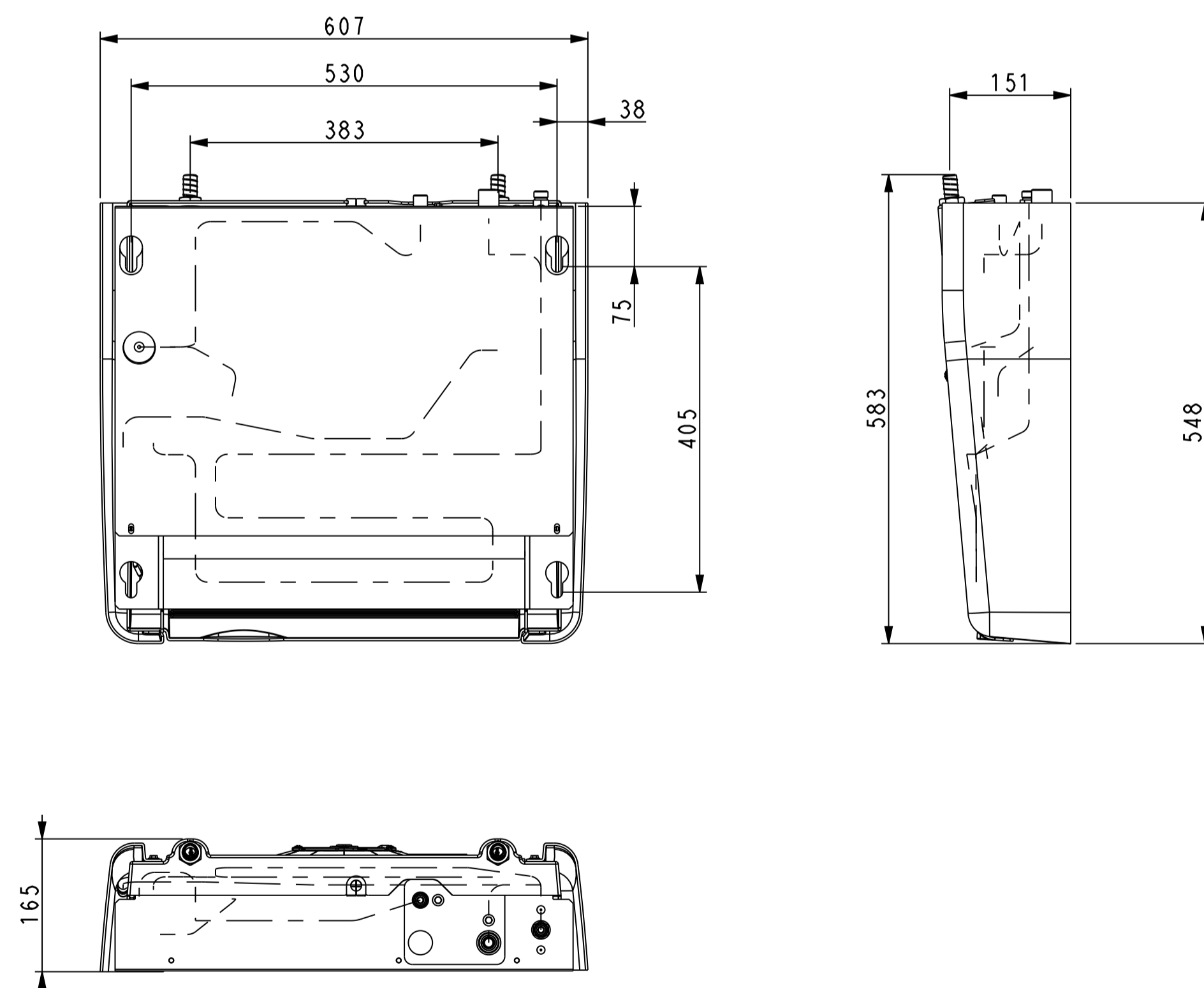
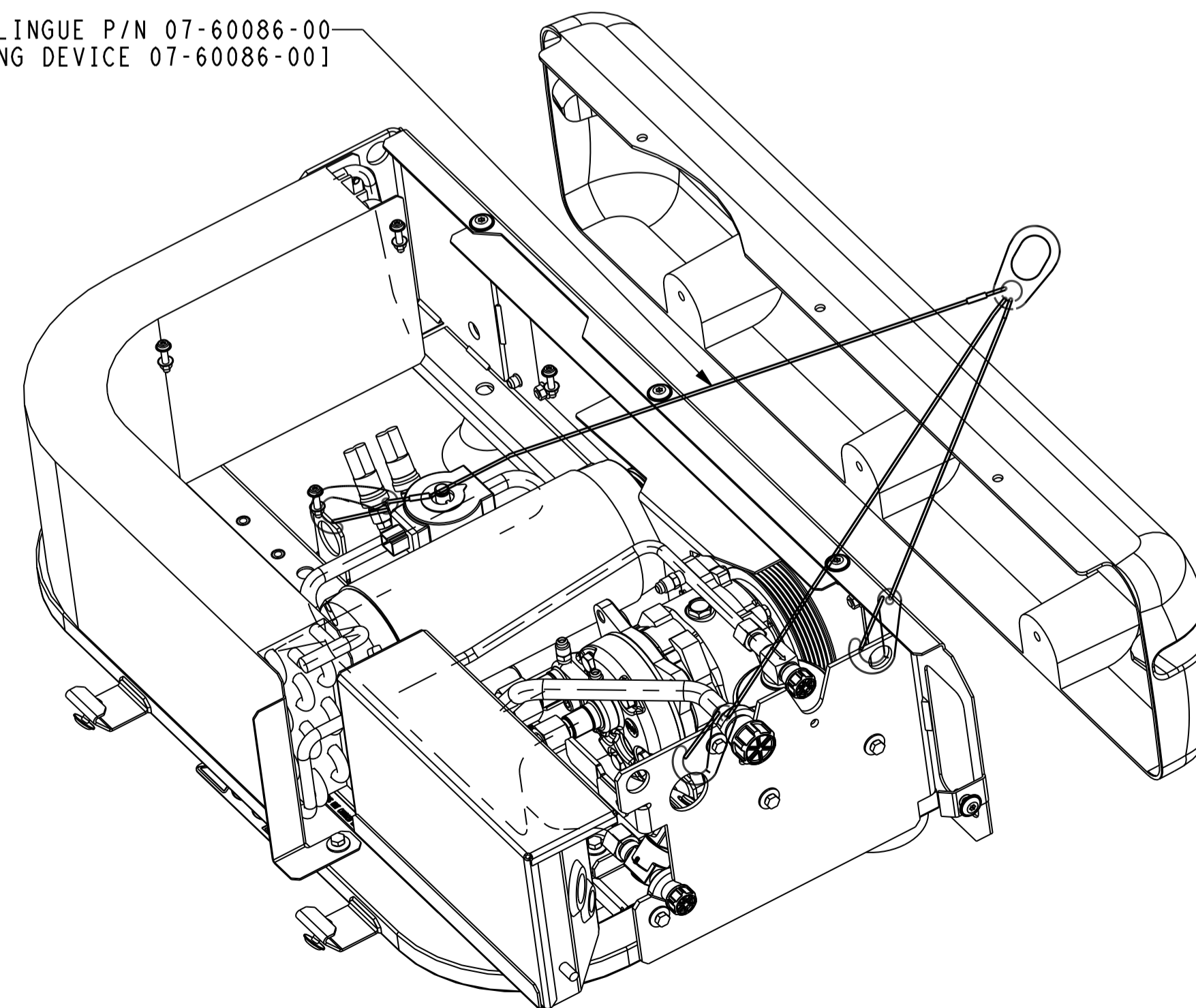


AVANT DE PERCER S'ASSURER QUE LES TROUS SERONT REALISES DANS LE BON SENS
POUR CELA UTILISER LES FLECHES D'ORIENTATION DE VUES A ET B ET LES VUE S
ASSOCIEES POUR SE REPERER
[BEFORE DRILLING MAKE SURE HOLES WILL BE REALIZED IN THE GOOD SIDE, FOR THIS
USED ARROWS A AND B AND VIEWS ASSOCIATED FOR ORIENTATION]

VUE SUIVANT B FIXATION DU CONDENSEUR PAR L'ARRIERE
[VIEW FOLLOWING B CONDENSER FIXATION BY THE REAR SIDE]



ELINGUE P/N 07-60086-00
[LIFTING DEVICE 07-60086-00]



NEOS 100S	WEIGHT Kg [lb]
CONDENSER UNIT	48 [106]
EVAPORATOR	15 [33]

INITIAL RELEASE

71E0001P10

22 FEB 10

C.S.

FIRST ANGLE
PROJECTION



METRIC FORMAT:
UNLESS OTHERWISE SPECIFIED
DIMENSIONS ARE IN MILLIMETERS WITH
IMPERIAL CONVERSIONS IN [INCHES]

TITLE

INSTRUCTION D'INSTALLATION NEOS 100S
[INSTALLATION INSTRUCTION NEOS 100S]

DRAWING NO.

98-60608

REV

-

SHEET 2 OF 2