

Carrier

A United Technologies Company

Carrier Transicold Division
Carrier Corporation
P.O. Box 4805
Syracuse, New York 13221

THIS DOCUMENT AND THE INFORMATION CONTAINED THEREIN IS PROPRIETARY TO CARRIER CORPORATION AND SHALL NOT BE USED OR DISCLOSED TO OTHERS, IN WHOLE OR IN PART, WITHOUT THE WRITTEN AUTHORIZATION OF CARRIER CORPORATION.

SUBMISSION OF THESE DRAWINGS OR DOCUMENTS DOES NOT CONSTITUTE PART PERFORMANCE OR ACCEPTANCE OF CONTRACT

LIGHT BAR ASSEMBLY AND INSTALLATION INSTRUCTIONS

PART NO.	MODEL DESCRIPTION
98-03246-00	ADVANCE MICRO UNITS
98-03246-01	SUMMIT MICRO UNITS
98-03246-02	TK UNITS
98-03246-03	APX UNITS

TIME FOR ASSEMBLY AND INSTALLATION: 1/2 HOUR

ASSEMBLY:

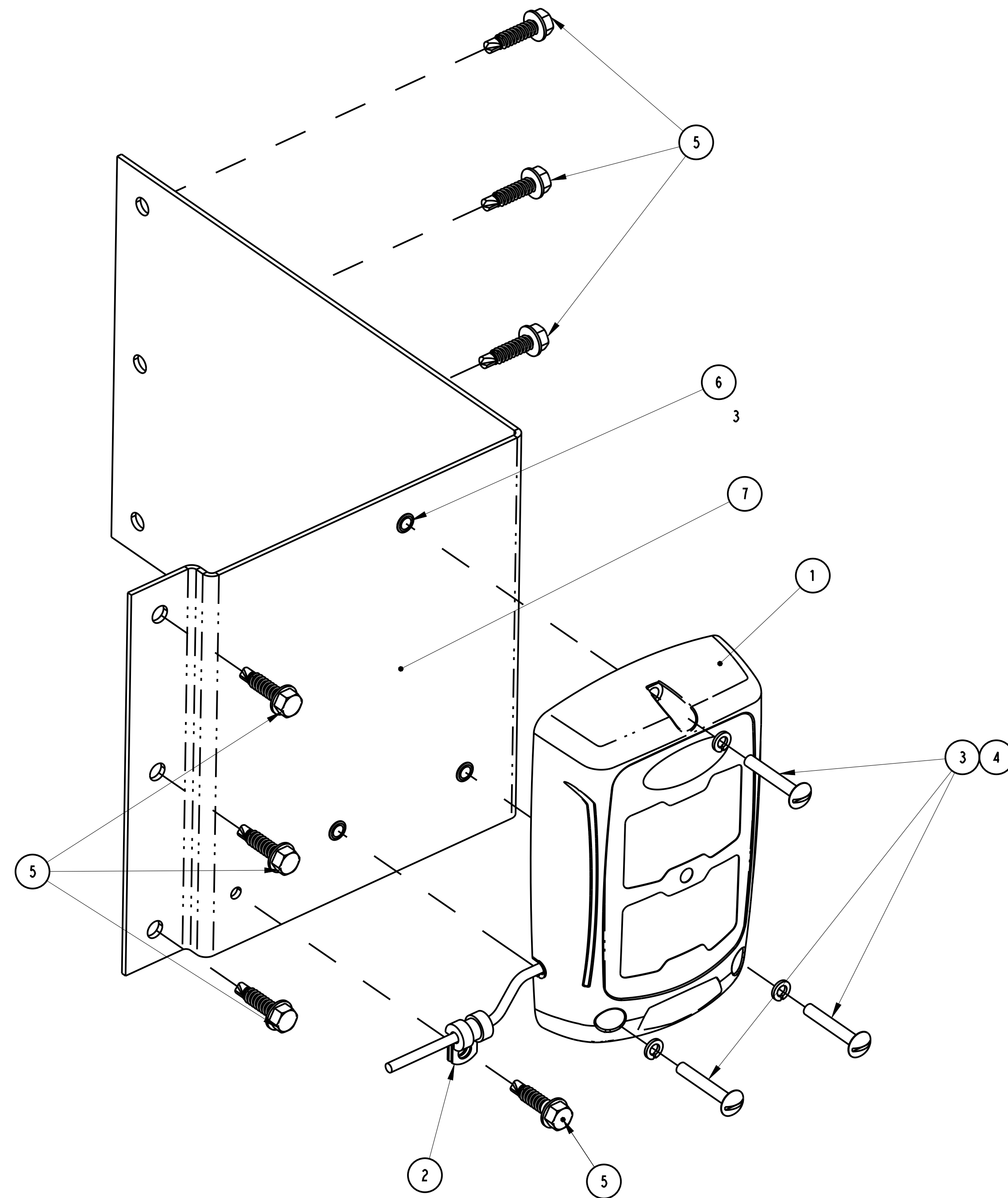
- THE LIGHT BAR ASSEMBLY REQUIRES ITEMS 1,2,5,7(QTY.1); 3,4(QTY.3); 6(QTY.3).
- LOCATE THE THREE (3) MACHINE SCREWS (ITEM 3), 3 LOCK WASHERS (ITEM 4), LIGHT BAR (ITEM 1), AND BRACKET (ITEM 7) WITH THREE (3) RIVNUTS (ITEM 6) ALREADY INSTALLED. PASS THE SCREWS AND LOCK WASHERS THROUGH THE HOLES OF THE LIGHT BAR AND MOUNT THE LIGHT BAR TO THE BRACKET.
 - TIGHTEN ALL SCREWS SECURELY.
 - PLACE ONE (1) CUSHION CLAMP (ITEM 2) AROUND HARNESS AS SHOWN, AND FASTEN IT TO THE BRACKET USING ONE (1) THREAD FORMING SCREW (ITEM 5).

INSTALLATION:

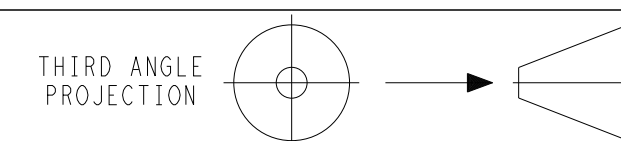
- THE LIGHT BAR IS TO BE MOUNTED ON THE FRONT, ROADSIDE RADIUS OF THE TRAILER. IT SHOULD BE MOUNTED AT A HEIGHT SUCH THAT IT IS EASILY VIEWED IN THE MIRROR OF THE TRUCK. CARRIER RECOMMENDS LOCATING THE BOTTOM EDGE OF THE BRACKET 42" UP FROM THE 5TH WHEEL PLATE OF THE TRAILER.
- MOUNT THE LIGHT BAR ASSEMBLY TO THE TRAILER USING SIX (6) SCREWS (ITEM 5).
- ROUTE HARNESS STRAIGHT ACROSS FRONT OF THE TRAILER TO THE UNIT FRAME, DOWN THE FRAME AND UNDERNEATH THE UNIT. USE CUSHION CLAMPS (ITEM 2) AND THREAD-FORMING SCREWS (ITEM 5) AS REQUIRED TO HOLD HARNESS IN PLACE.

7.0 UNIT SPECIFIC INSTRUCTIONS:

- APX UNITS (WITH 3 PIN CONNECTOR):
 - LOCATE THE 3-PIN LIGHT BAR CONNECTOR (W/ ITS FEMALE MATING DUMMY CAP) ON THE APX UNIT HARNESS LOCATED AT THE FRONT ROADSIDE CORNER POST NEXT TO THE DISPLAY. (ITS WIRES - FROM CAVITY A TO CAVITY C - ARE MARKED PCM7-LBA, SP2-LBB, AND 3MM7-LBC.)
 - REMOVE THE FEMALE MATING CAP AND REMOVE THE CAVITY SEALS FROM IT.
 - LOCATE THE FEMALE 8-PIN CONNECTOR OF THE LIGHT BAR.
 - ONE AT A TIME, AND IN THE FOLLOWING STEPS, RELOCATE THE PINS, SEALS AND WIRES FROM THE 8-PIN CONNECTOR BODY TO THE 3-PIN CONNECTOR BODY JUST REMOVED FROM THE APX UNIT HARNESS:
 - REMOVE THE PIN FROM THE B CAVITY OF THE 8-PIN CONNECTOR AND INSTALL IN THE A CAVITY OF THE 3-PIN CONNECTOR. (RED WIRE)
 - REMOVE THE PIN FROM THE G CAVITY OF THE 8-PIN CONNECTOR AND INSTALL IN THE B CAVITY OF THE 3-PIN CONNECTOR. (BLACK WIRE)
 - REMOVE THE PIN FROM THE H CAVITY OF THE 8-PIN CONNECTOR AND INSTALL IN THE C CAVITY OF THE 3-PIN CONNECTOR. (WHITE WIRE)
 - CONNECT THE NEWLY ASSEMBLED FEMALE 3-PIN CONNECTOR ON THE LIGHT BAR TO THE MATING 3-PIN MALE CONNECTOR OF THE APX UNIT HARNESS.
 - DISCARD THE 8-PIN CONNECTOR.
 - INSTALL SUPPLIED 5A FUSE IN POWER CONTROL MODULE (PCM) SLOT F11 (LIGHT BAR POWER).
 - THE LIGHT BAR CONFIGURATION WITHIN THE MICRO MUST BE SET TO "2-LIGHT" FOR THE LIGHT BAR TO FUNCTION PROPERLY. THIS CAN BE DONE W/ TRU-TECH PC SOFTWARE VIA THE USB PORT, OR IT CAN BE DONE AT THE KEYPAD IN CONFIGURATION MODE (FOUND AT CONFIGURATION SETTINGS - OTHER SETTINGS - LIGHT BAR).
- APX UNITS (WITH 8 PIN CONNECTOR)
 - BEHIND THE FRON ROADSIDE FRAME CORNER POST, LOCATE THE LIGHT BAR PLUG THAT MATCHES THE PLUG ON THE LIGHT BAR HARNESS. REMOVE THE SEAL CAP AND PLUG THE CONNECTORS TOGETHER.
 - INSTALL SUPPLIED 5A FUSE IN POWER CONTROL MODULE (PCM) SLOT F11 (LIGHT BAR POWER).
 - THE LIGHT BAR CONFIGURATION WITHIN THE MICRO MUST BE SET TO "2-LIGHT" FOR THE LIGHT BAR TO FUNCTION PROPERLY. THIS CAN BE DONE W/ TRU-TECH PC SOFTWARE VIA THE USB PORT, OR IT CAN BE DONE AT THE KEYPAD IN CONFIGURATION MODE (FOUND AT CONFIGURATION SETTINGS - OTHER SETTINGS - LIGHT BAR).
- ADVANCE UNITS:
 - BELOW THE UNIT, AT THE BACK OF THE CONTROL BOX, LOCATE THE LIGHT BAR PLUG THAT MATCHES THE PLUG ON THE LIGHT BAR HARNESS. REMOVE THE SEAL CAP AND PLUG THE CONNECTORS TOGETHER.
 - ENSURE THAT THE OPERATIONAL SOFTWARE IS AT LEAST AT VERSION 03.03.00. UPGRADING TO THE LATEST SOFTWARE VERSION IS RECOMMENDED, AND IS AVAILABLE FROM AUTHORIZED CARRIER TRANSICOLD DEALERS.
 - THE LIGHT BAR CONFIGURATION WITHIN THE MICRO MUST BE SET TO "TWO LIGHT" LIGHT BAR FOR IT TO FUNCTION PROPERLY. THIS CAN BE DONE W/ REEFERMANAGER PC SOFTWARE USING THE SERIAL PORT, OR WITH A CONFIGURATION PC CARD. IT CAN ALSO BE DONE AT THE KEYPAD IN CONFIGURATION MODE.
- SUMMIT UNITS:
 - INSTALL JUMPER HARNESS (ITEM 10) TO LIGHT BAR ASSY CABLE. BELOW THE UNIT, AT THE BACK OF THE CONTROL BOX, LOCATE THE PLUGS FOR DATA RECORDER AND LIGHT BAR THAT MATCHES THE PLUGS ON THE LIGHT BAR JUMPER HARNESS. REMOVE THE SEAL CAPS AND PLUG THE CONNECTORS TOGETHER.
- TK UNITS:
 - INSTALL JUMPER (ITEM 10) TO LIGHT BAR ASSY CABLE. BELOW THE UNIT, LOCATE THE PLUG THAT MATCHES THE PLUG ON THE JUMPER. REMOVE THE SEAL CAP AND PLUG THE CONNECTORS TOGETHER.



C	REVISED SPEC. 7.1.A WAS 7.1. ADDED SPEC. 7.1.B AND 7.1.9 THRU 7.1.11.		PJS			72N0031P11
B	REVISED SPEC. 7.2.4.3 ... (WHITE WIRE) WAS (RED WIRE).	8/2/11	PJS			72N0021P11
A	ADDED -03. REVISED NOTES TO INCLUDE APX INFORMATION.	5/13/11	PJS			72N0016P11
-	INITIAL RELEASE.	25MAY2005	ZMG			72N205GP05
SYM	REVISION RECORD	DATE	BY	ENGR.	M.E.	NPCA NO.



INSTALLATION INSTRUCTIONS
LED LIGHT BAR ASSY

DRAWING NO.	98-03246	REV	C
SHEET	1 of 1		