



UNITED TECHNOLOGIES
CARRIER
TRANSCOLD
Carrier Transicold Division
Carrier Corporation
P.O. Box 4805
Syracuse, New York 13221

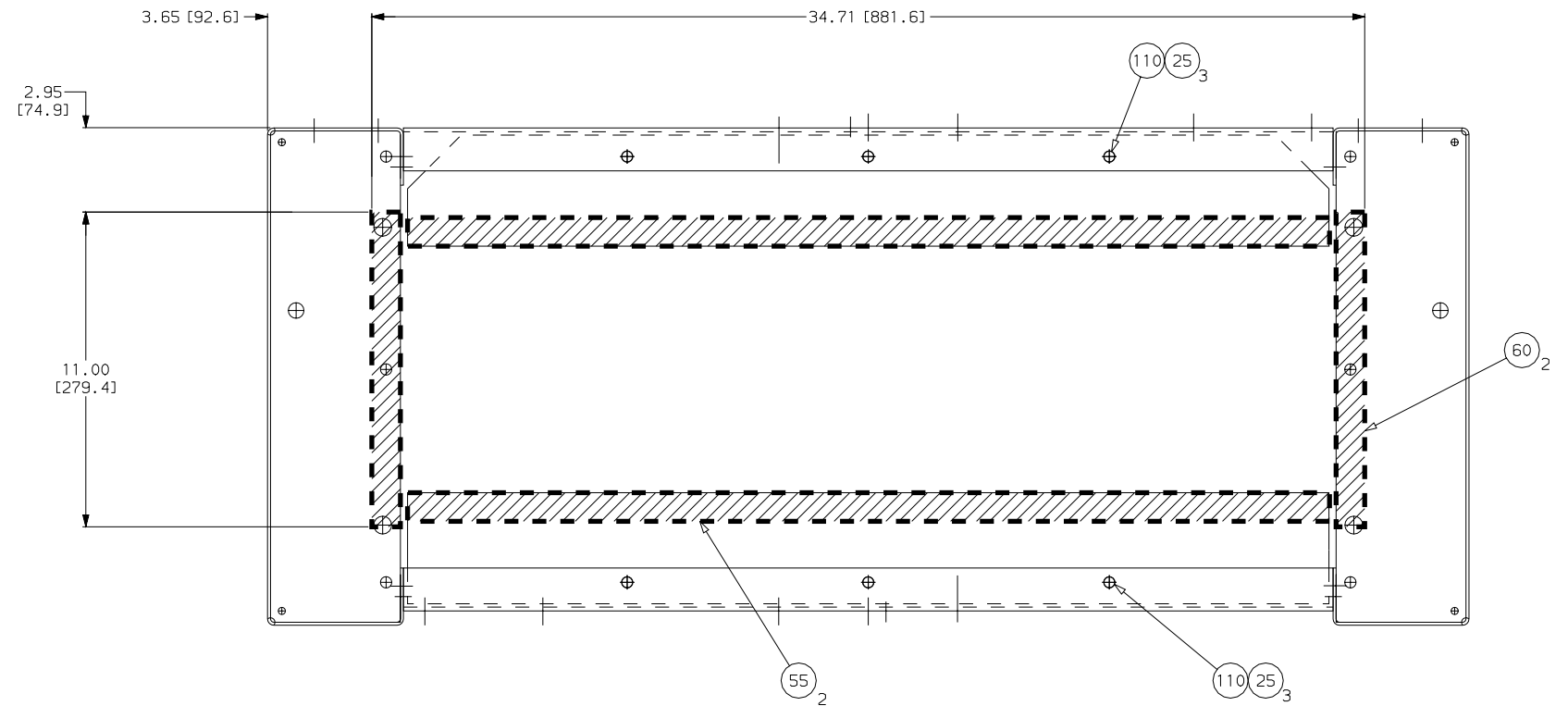
THIS DOCUMENT IS THE PROPERTY OF CARRIER CORPORATION AND IS DELIVERED UPON THE EXPRESS CONDITION THAT THE CONTENTS WILL NOT BE DISCLOSED OR USED WITHOUT CARRIER CORPORATION'S WRITTEN CONSENT.

SUBMISSION OF THESE DRAWINGS OR DOCUMENTS DOES NOT CONSTITUTE PART PERFORMANCE OR ACCEPTANCE OF CONTRACT

NOTES:

- CARRIER TRANSCOLD PROVIDES CIRCLED ITEM NUMBERS AS PART OF THE INSTALLATION KIT FURNISHED WITH EACH FUEL TANK ASSY.
- CONSULT CARRIER TRANSCOLD SERVICE ENGINEERING FOR PROPER INSTALLATION OF OPTIONAL FEATURES NOT DETERMINED AS CARRIER SUPPLIED.
- DIMENSIONS SHOWN ARE IN INCHES WITH EQUIVALENT MILLIMETERS IN CLOSED BRACKETS [].
- THE TRAILER STRUCTURE MUST BE EVALUATED BY THE TRAILER MANUFACTURER TO DETERMINE ITS ABILITY TO WITHSTAND THE IMPOSED LOADS OVER ITS SERVICE LIFE. THESE GUIDELINES DO NOT CONVEY ENDORSEMENT OR WARRANTY BY CARRIER TRANSCOLD FOR THE STRUCTURAL INTEGRITY OF THE TRAILER.
- RECOMMENDED TORQUE VALUES FOR FURNISHED LOCK NUTS ARE AS FOLLOWS:

BOLT/THREAD	TORQUE (FT-LB)
1/2-13	60
1/2-20 (TANK STRAPS)	20-30
- INSTALLATION ASSEMBLY SEQUENCE:
 - MOUNT BRACKETS ITEM 105 TO TRAILER WALL.
 - INSTALL REAR GASKET PLATE ITEM 110 WITH GASKET ITEM 55 ATTACHED.
 - INSTALL GASKETS ITEM 60 TO FRAME AS SHOWN.
 - INSTALL TANK WITH MOUNTING STRAPS ITEM 100.
 - INSTALL FRONT GASKET PLATE ITEM 110 WITH GASKET ITEM 55 ATTACHED.
- FOR INSTALLATION OF ITEMS 40 AND 45 SEE ELECTRIC FUEL PUMP INSTALLATION INSTRUCTION DRAWING LISTED BELOW.



SECTION A-A

(SEE SHEET 2)

SCALE: 1:4

(GASKET PLATES AND GASKETS TO BE INSTALLED ON BOTTOM SIDE OF UNIT FRAME)

CROSS REFERENCE INDEX		
DESCRIPTION	INSTALLATION DRAWING NO.	KIT NO.
ELECTRIC FUEL PUMP INSTALLATION	98-03235-00	SUPPLIED WITH UNIT PACKAGING
UNIT INSTALLATION	98-02239-00	SUPPLIED WITH UNIT PACKAGING

140			
115	68-11999-00	ANGLE, FUEL TANK	2
110	68-11972-00	PLATE, GASKET MTG.	2
105	68-11966-00	BRACKET, TANK SUPPORT	2
100	68-11903-02	STRAP, FUEL TANK	2
86			
85			
80	62-02181-00	DECAL, DIESEL FUEL ONLY	1
70			
60	42-00258-05	GASKET	2
55	42-00258-04	GASKET	2
45	40-00450-01	CONNECTOR, MALE 3/8 TUBE X 1/4 MPT	1
40	40-00450-00	CONNECTOR, MALE 1/4 TUBE X 1/4 MPT	1
25	34-00918-08	SCREW, MACH HXHD 1/4-20 X 1.00 CAPWSH	6
23	34-00304-10	SCREW, CAP HXHD 3/8-16 X 1.25	4
20	34-00588-15	WASHER, PLAIN 1/2 SAE	16
18	34-00366-13	WASHER, PLAIN 3/8	8
15	34-00361-15	NUT, SELF LOCK 1/2-13 UNC	12
14	34-00361-13	NUT, SELF LOCK 3/8-16 UNC	4
10	34-00360-15	NUT, SELF LOCK 1/2-20 UNF	4

SHEET INDEX	REV SHEET	C	C	-
		1	2	3

C	IN CROSS REF. INDEX CHART; INSTALL DWG: 98-03235-00 WAS 98-02235-00 PER PCA71N2046P04					MGC	3/2/04
B	REMOVED IT.90 FROM CHART PER IPCA71N2006P00/89					CEJ	08/18/00
SYM	REVISION RECORD	ENGRG.	DATE	APPLICATION ENGRG.	DATE	DRAWN BY	DATE

SUPERSEDES	TITLE	DRAWING NO.	REV
	INSTALLATION INSTRUCTIONS SOLARA INTEGRAL FUEL TANK	98-02240 SHT. 1 OF 3	C

BILL OF MATERIAL KIT P/N: 76-00662-00

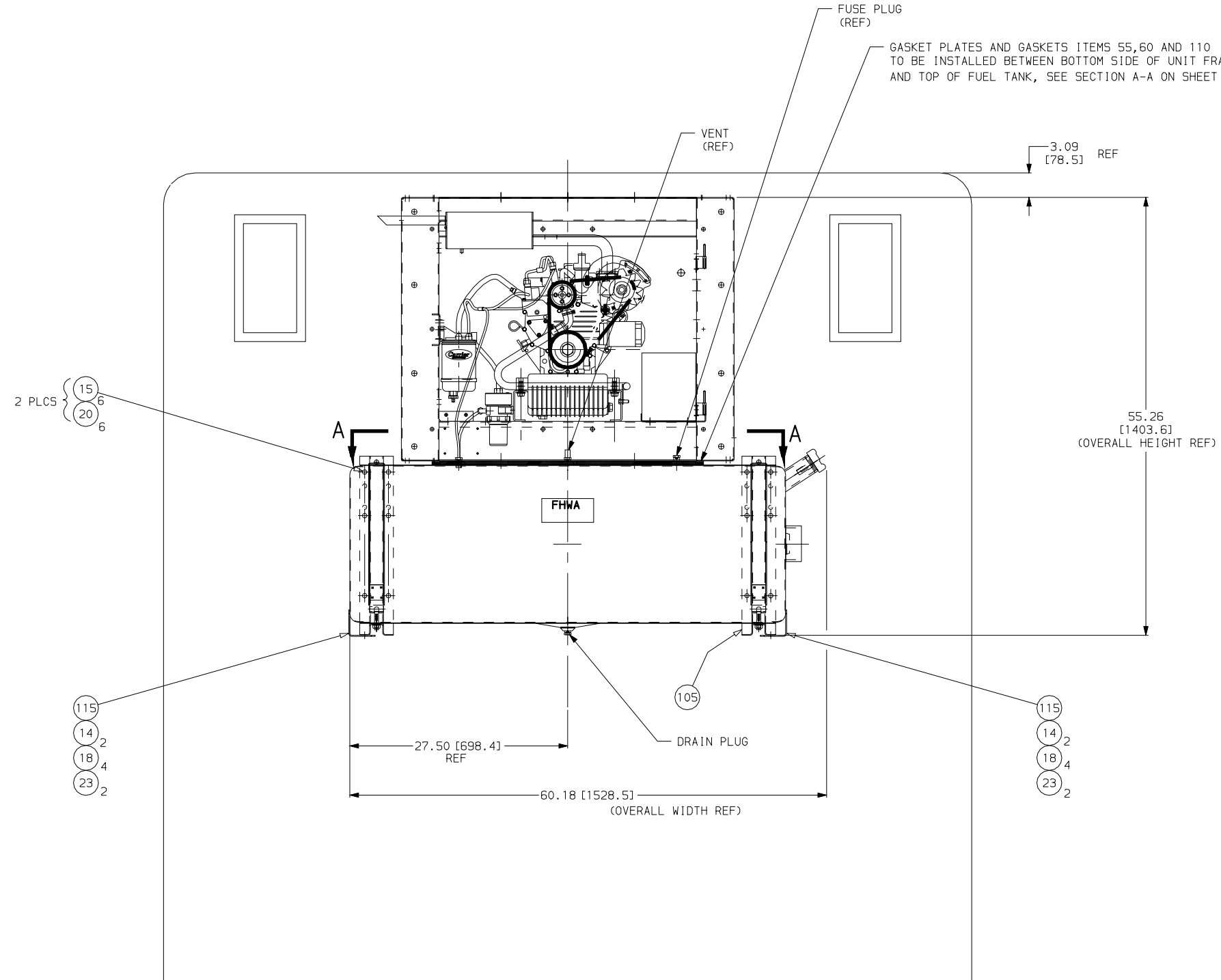


UNITED
TECHNOLOGIES
CARRIER
TRANSCOLD

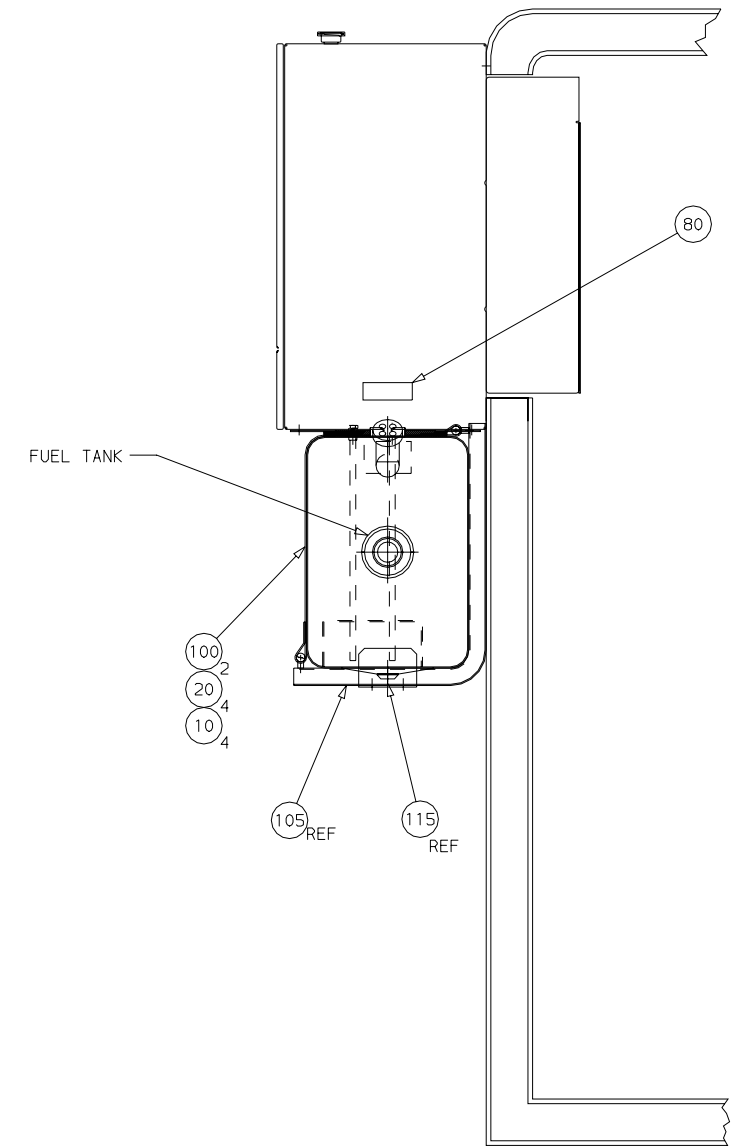
Carrier Transcold Division
Carrier Corporation
P.O. Box 4805
Syracuse, New York 13221

THIS DOCUMENT IS THE PROPERTY OF CARRIER CORPORATION
AND IS DELIVERED UPON THE EXPRESS CONDITION THAT THE
CONTENTS WILL NOT BE DISCLOSED OR USED WITHOUT CARRIER
CORPORATION'S WRITTEN CONSENT.

SUBMISSION OF THESE DRAWINGS OR DOCUMENTS
DOES NOT CONSTITUTE PART PERFORMANCE OR
ACCEPTANCE OF CONTRACT



TRAILER FRONT VIEW



TRAILER SIDE VIEW

C	PIC'T UPDATED FUEL SYSTEM PER PCA71N204GP04					MGC	3/2/04
B	REMOVED BALLOON CALLOUT IT.90; ADDED FUEL TANK CALLOUT PER 1PCA71N200GP00/89					CEJ	08/18/00
SYM	REVISION RECORD	ENGRG.	DATE	APPLICATION ENGRG.	DATE	DRAWN BY	DATE

SUPERSEDES

TITLE

INSTALLATION INSTRUCTIONS
SOLARA INTEGRAL FUEL TANK

DRAWING NO.
98-02240
SHT. 2 OF

REV
C



UNITED
TECHNOLOGIES
CARRIER
TRANSCOLD

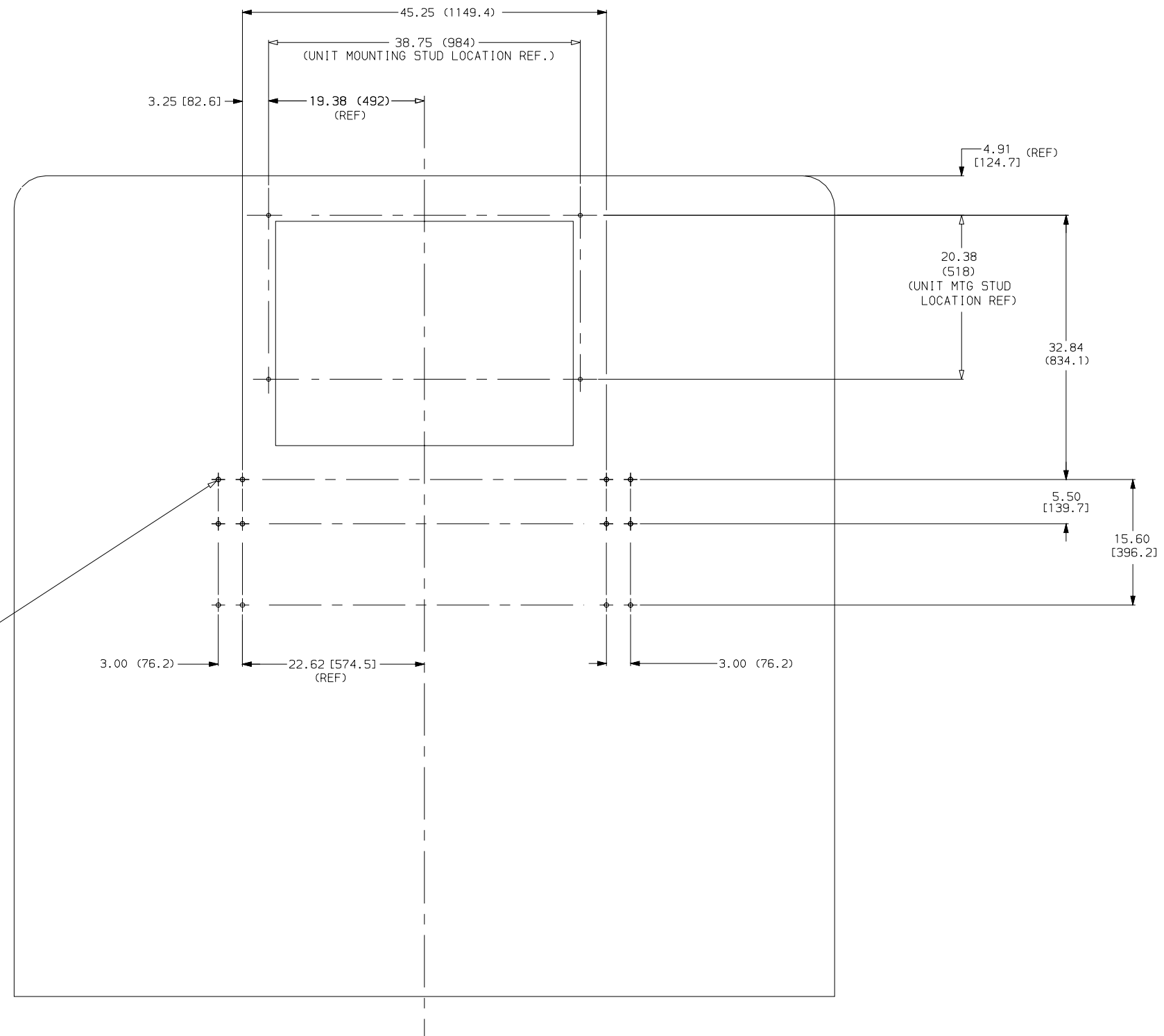
Carrier Transcold Division
Carrier Corporation
P.O. Box 4805
Syracuse, New York 13221

THIS DOCUMENT IS THE PROPERTY OF CARRIER CORPORATION
AND IS DELIVERED UPON THE EXPRESS CONDITION THAT THE
CONTENTS WILL NOT BE DISCLOSED OR USED WITHOUT CARRIER

SUBMISSION OF THESE DRAWINGS OR DOCUMENTS
DOES NOT CONSTITUTE PART PERFORMANCE OR
ACCEPTANCE OF CONTRACT

FUEL TANK MOUNTING STUDS

1/2-13 STUDS. STRUCTURE MUST BE
SUFFICIENT TO SUPPORT FULL FUEL
TANK WEIGHT (APPROX 595 LBS) EXPOSED
STUD LENGTH 1.00 - 1.25 INCHES (12) REQUIRED.
STUDS TO BE SUPPLIED AND INSTALLED BY
TRAILER MANUFACTURER.



TRAILER FRONT WALL

TRAILER PREPARATION INTEGRAL FUEL TANK

-	INITIAL RELEASE PER NPR724018GN					TSV	09/14/94	SUPERSEDES	TITLE	SOLARA - INSTALLATION INSTRUCTIONS INTEGRAL FUEL TANK	DRAWING NO. 98-02240	REV -
SYM	REVISION RECORD	ENGRG.	DATE	APPLICATION ENGRG.	DATE	DRAWN BY	DATE				SHEET 3 OF	