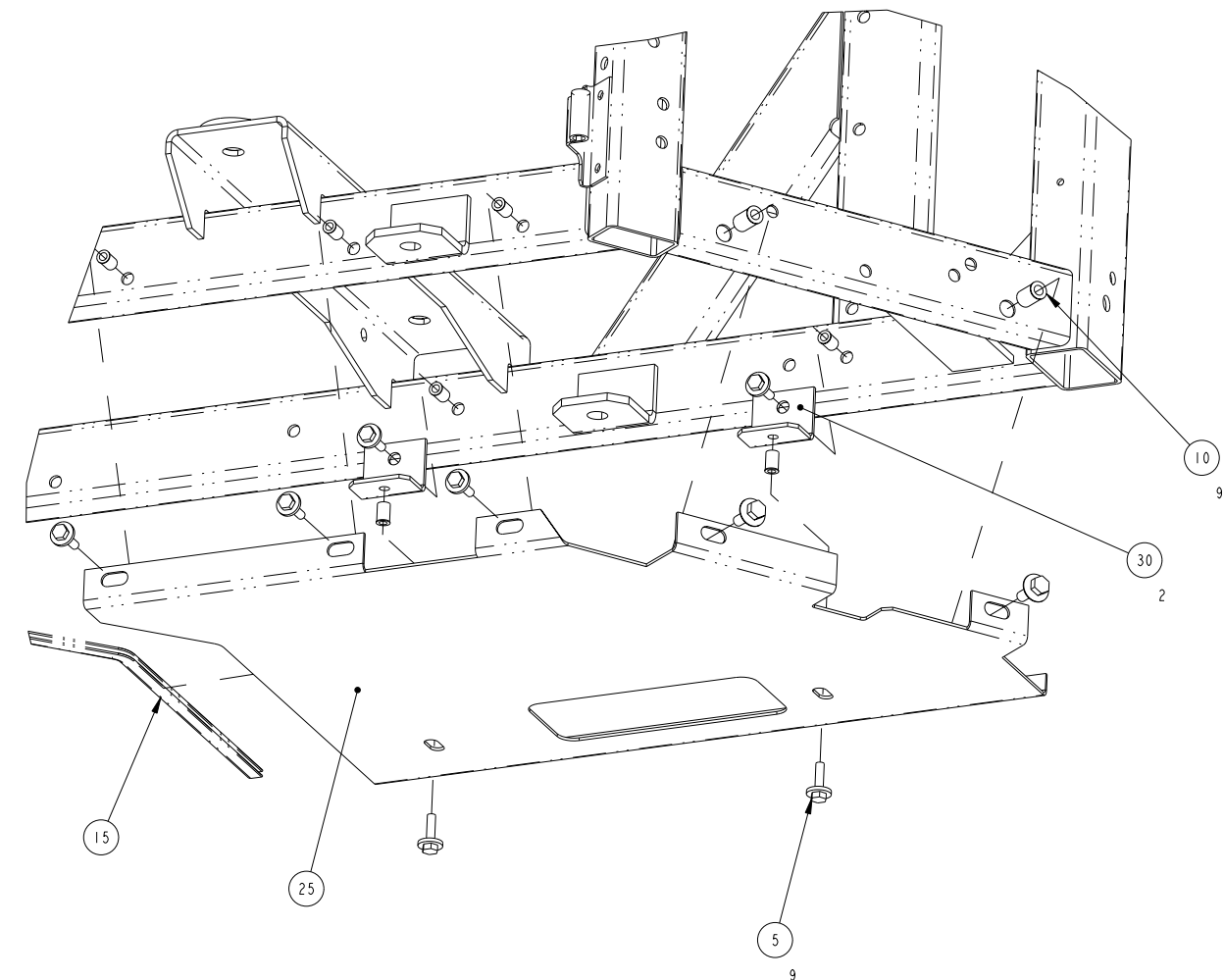
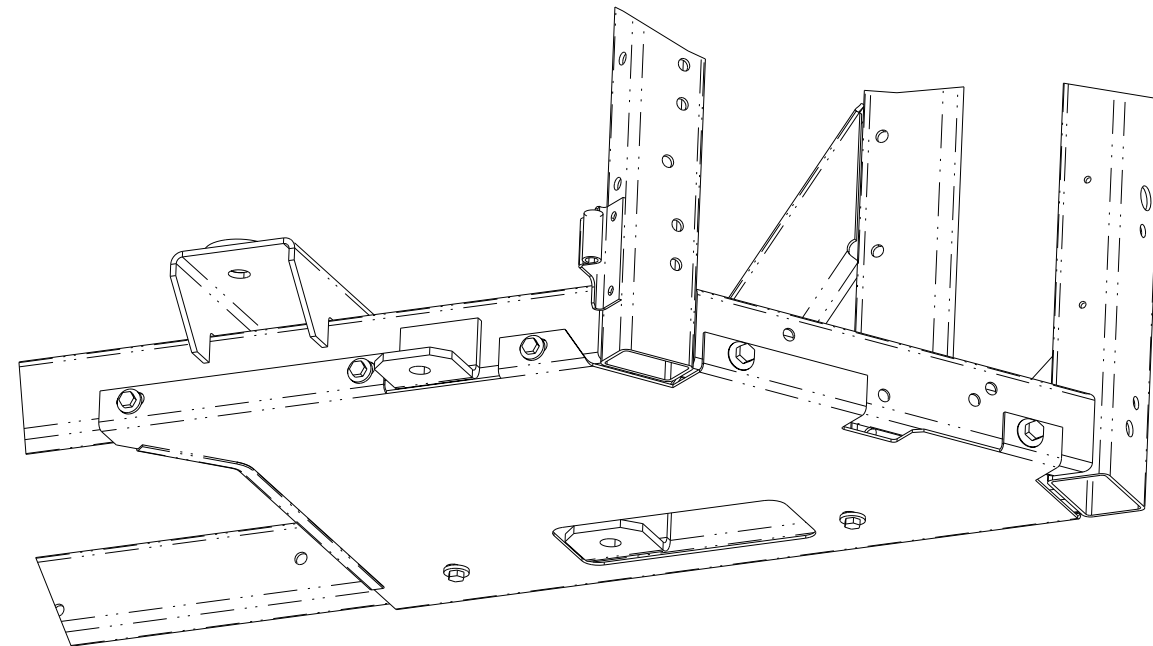


INSTALLATION INSTRUCTIONS

- 1.0 LOCATE ANGLES (ITEM 30) AND INSTALL RIVNUTS (ITEM 10) AS SHOWN.
- 2.0 USING BOTTOM PANEL AS A TEMPLATE, PLACE PANEL ONTO FRAME TO DETERMINE IF MOUNTING HOLES ARE PRESENT. IF SO THEN PROCEED TO STEP 4.0. IF NOT GO TO STEP 3.0.
- 3.0 ATTACH ANGLES (ITEM 30) TO BOTTOM PANEL (ITEM 25) WITH SCREWS (ITEM 5) IN LOCATIONS SHOWN. THEN USING BOTTOM PANEL AS A TEMPLATE MARK LOCATIONS ON FRONT, REAR AND SIDE DIAGONAL FRAME MEMBERS. DRILL 0.397 DIA [10 MM] HOLES AND INSTALL RIVNUTS (ITEM 10).
- 4.0 INSTALL ANGLES (ITEM 30) TO REAR FRAME MEMBER WITH SCREWS (ITEM 5) OR EXISTING HARDWARE.
- 5.0 INSTALL BOTTOM PANEL (ITEM 25) AND SECURE WITH SCREWS (ITEM 5).
- 6.0 WITH BOTTOM PANEL MOUNTED INSTALL EDGE TRIM (ITEM 15) AS SHOWN.



SEE SEPARATE PARTS LIST

-	INITIAL RELEASE.	7/23/01	ZMG			72N229GP01	SUPERSEDES	TITLE	INSTALLATION INSTRUCTIONS MICRO BOTTOM PANEL	DRAWING NO. 98-03218	REV -
SYM	REVISION RECORD	DATE	BY	CHK'D	APP'D	AUTH NO.				SHEET 1 OF 1	