



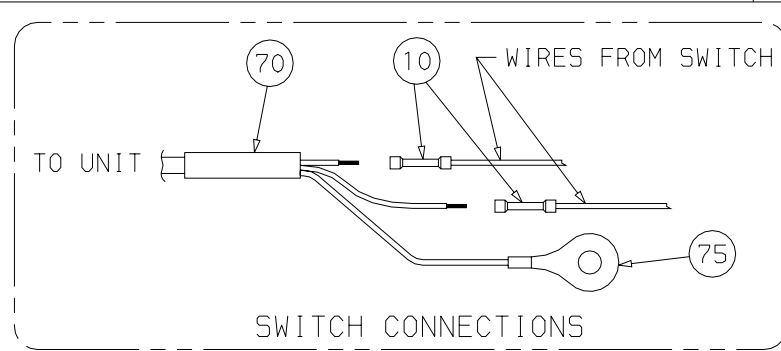
UNITED TECHNOLOGIES CARRIER TRANSCOLD  
 Carrier Transcold Division  
 Carrier Corporation  
 P.O. Box 4805  
 Syracuse, New York 13221

THIS DOCUMENT IS THE PROPERTY OF CARRIER CORPORATION AND IS DELIVERED UPON THE EXPRESS CONDITION THAT THE CONTENTS WILL NOT BE DISCLOSED OR USED WITHOUT CARRIER

SUBMISSION OF THESE DRAWINGS OR DOCUMENTS DOES NOT CONSTITUTE PART PERFORMANCE OR ACCEPTANCE OF CONTRACT

### CROSS REFERENCE INDEX

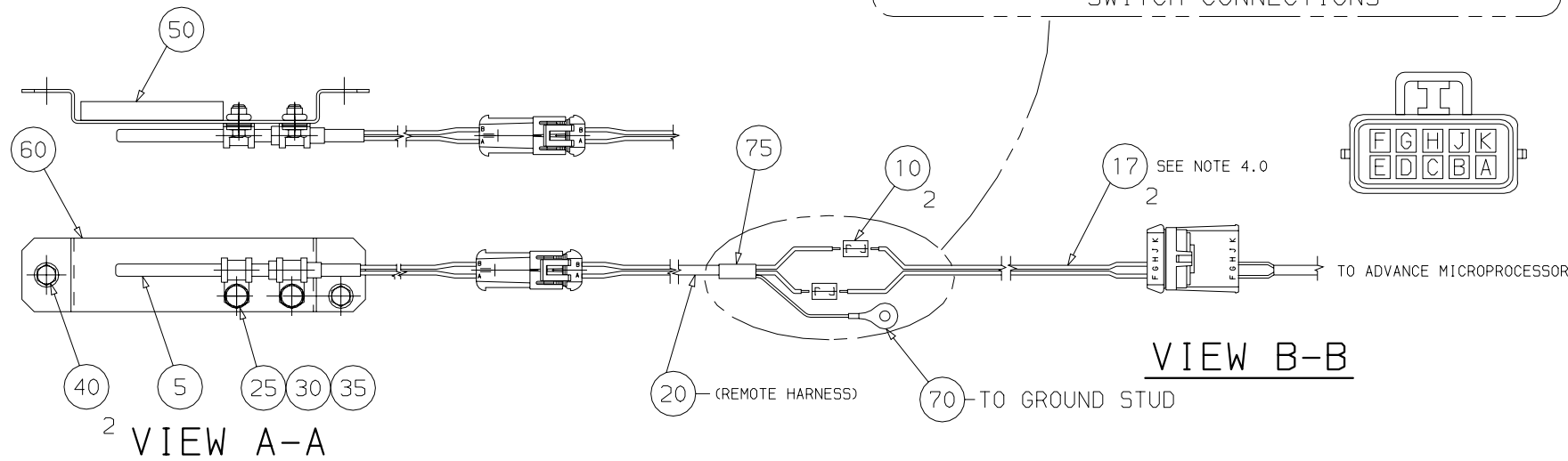
DESCRIPTION	INSTALLATION DRAWING NO.	KIT NO.
REMOTE MONITOR, SENSOR KIT	98-02344	76-00725-00
REMOTE MONITOR, SWITCH KIT	98-02344	76-00725-01
REMOTE MONITOR, PULP PROBE KIT	98-02344	76-00725-02
REMOTE MONITOR, SENSOR KIT 100 FT.	98-02344	76-00725-03



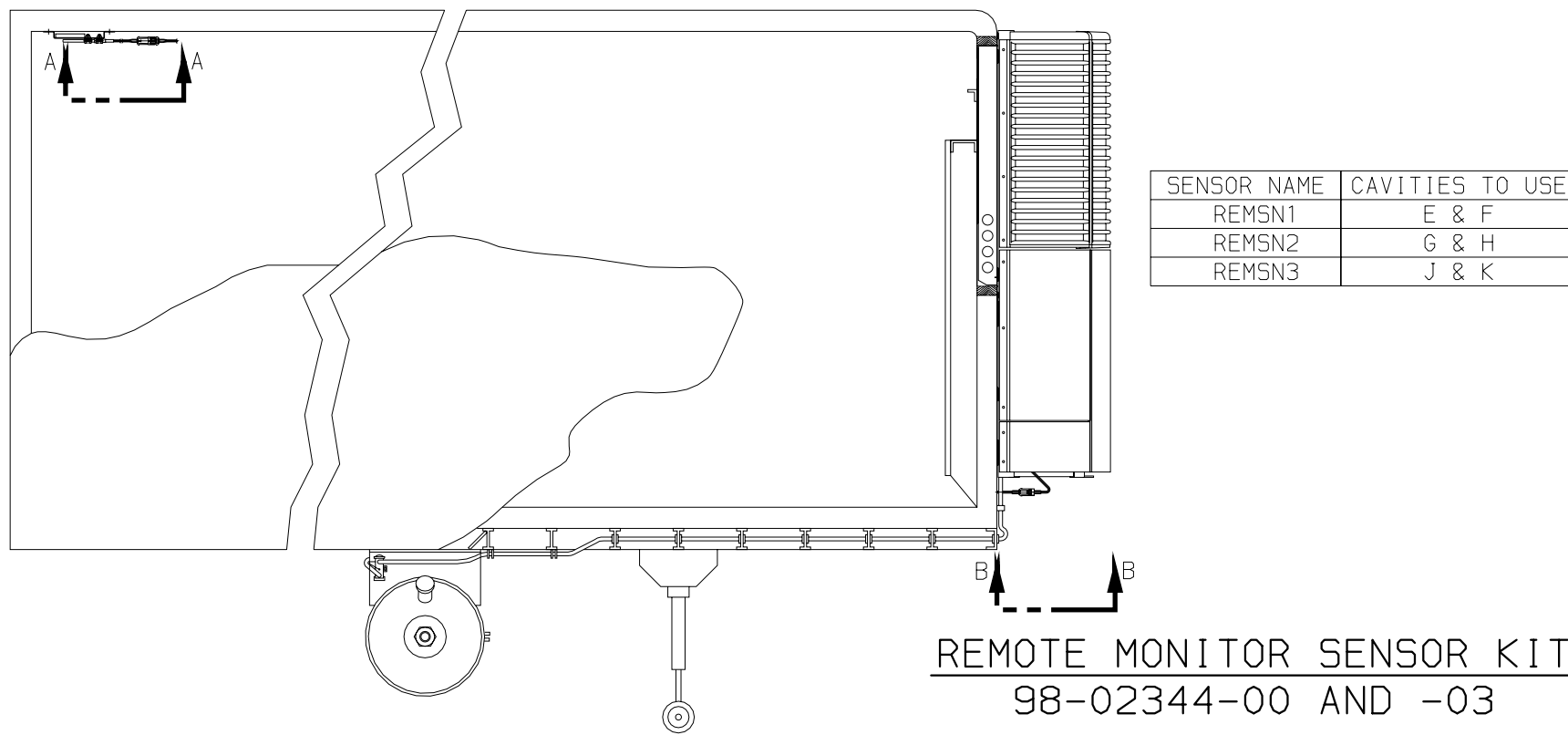
PART NO.	MODEL DESCRIPTION
98-02344-00	REMOTE MONITOR SENSOR KIT FOR ADVANCE MICRO UNITS
98-02344-01	REMOTE DOOR SWITCH KIT FOR ADVANCE MICRO UNITS
98-02344-02	REMOTE PULP PROBE KIT FOR ADVANCE MICRO UNITS
98-02344-03	REMOTE MONITOR SENSOR KIT FOR ADVANCE MICRO UNITS, 100 FT.

NOTE: INSTALLATION OF THIS REMOTE SENSOR KIT REQUIRES A 3/8" DIA HOLE TO BE DRILLED THROUGH THE NOSE OF THE TRAILER. THE TRAILER MANUFACTURER AND/OR CUSTOMER SHOULD BE CONSULTED PRIOR TO INSTALLATION FOR EXPLICIT INSTRUCTIONS ON THIS PROCEDURE TO AVOID AFFECTING THE TRAILER MANUFACTURER'S WARRANTY. THE CABLE MAY BE ROUTED INTO THE TRAILER THROUGH THE EVAPORATOR POD, HOWEVER, THIS WILL MAKE IT NECESSARY TO DISMOUNT THE ENTIRE CABLE INSIDE THE TRAILER SHOULD THE UNIT EVER NEED TO BE REMOVED.

- INSIDE THE TRAILER, MOUNT THE REMOTE SENSOR BRACKET TO THE CEILING OF THE TRAILER APPROXIMATELY 6' TO 10' FROM THE REAR DOOR, OR ACCORDING TO CUSTOMER SPECIFICATION. THE SENSOR SHOULD BE MOUNTED NEXT TO THE CURB-SIDE WALL TO MINIMIZE THE POSSIBILITY OF DAMAGE DURING LOADING AND UNLOADING. PLUG IN THE REMOTE SENSOR HARNESS TO THE SENSOR.
  - ROUTE THE CABLE FROM THE SENSOR DIRECTLY TO THE ROAD-SIDE CEILING OF THE TRAILER. AFFIX THE CABLE USING THE CUSHION CLAMPS (ITEM 25) AND SELF THREADING SCREWS (ITEM 40). ROUTE THE CABLE ALONG THE CEILING AS CLOSE TO THE ROAD-SIDE CEILING/WALL AS POSSIBLE TO REDUCE THE POSSIBILITY OF DAMAGE, CLAMPING EVERY 2 TO 3 FT. ROUTE CABLE DOWN THE FRONT WALL TO NEAR THE FLOOR OF THE TRAILER.
  - DRILL A 3/8" DIA HOLE THROUGH THE FRONT WALL OF THE TRAILER, (SEE NOTE ABOVE), PREFERABLY THE AREA BEHIND CONTROL BOX FROM THE INSIDE OF THE TRAILER, PASS THE CABLE (ITEM 20) THROUGH THIS HOLE SO THAT THE EXCESS IS HANGING OUTSIDE THE FRONT OF THE TRAILER. USE SILICONE CAULK OR SIMILAR MATERIAL TO STABILIZE THE CABLE THROUGH THE WALL AND TO SEAL THE WALL AGAINST MOISTURE INTRUSION.
  - TO CONNECT REMOTE SENSOR TO THE ADVANCE MICROPROCESSOR DATARECORDER (NOTE: USE 2 REMOTE PROBE CONNECTORS WITH BARE TERMINALS. ITEM 17) THERE IS A 10-PIN CONNECTOR BEHIND CONTROL BOX AT THE LOWER, ROAD-SIDE CORNER OF THE UNIT. LOCATE THIS CONNECTOR AND REMOVE THE MATING PLUG. REMOVE THE WIRE LOCK FROM THE PLUG AND DISCARD THE CAVITY PLUGS FROM THE APPROPRIATE CAVITIES ACCORDING TO THE CHART BELOW. INSERT THE TWO WIRES FROM THE REMOTE SENSOR HARNESS INTO THE NOW EMPTY CAVITIES OF THE MATING PLUG. BE SURE THAT THE PINS ARE ORIENTED CORRECTLY SO AS NOT TO DAMAGE THEM. YOU SHOULD FEEL/HEAR THEM CLICK INTO PLACE WHEN THEY ARE CORRECT. REPLACE THE WIRE LOCK, AND PLUG IN THE CONNECTOR.
  - CUT OFF EXCESS CABLE, THEN CAREFULLY STRIP BACK THE WHITE JACKET ABOUT 2". CAREFULLY TRIM OFF BRAID LEAVING ABOUT 0.25" EXPOSED. THEN USING SOLDER SLEEVE TERMINAL (ITEM 70) ATTACH GROUND WIRE (ITEM 75) TO EXPOSED BRAID WITH HEAT GUN. APPLY HEAT UNTIL SOLDER RING INSIDE SOLDER SLEEVE MELTS AND FUSES WIRE AND SHIELD. USE THE BUTT SPLICE (ITEM 10) TO CONNECT THE SENSOR CABLE TO THE REMOTE PROBE CABLE CONNECTOR. IT IS NOT IMPORTANT WHICH WIRES ARE CONNECTED TOGETHER. SHRINK THE TUBING USING A HEAT GUN. ATTACH RING TERMINAL TO GROUND STUD ON FRAME.
- NOTE: FOR MORE DETAILED INSTRUCTION ON INSTALLATION OF "SOLDER SLEEVE" SEE TECHNICAL INSTRUCTION 98-50179-00. THIS INSTRUCTION IS AVAILABLE ON THE CTD TRUCK/TRAILER REFERENCE LIBRARY.
- USE WIRE TIES (ITEM 55) PROVIDED TO TIE EXCESS CABLE OUT OF THE WAY AT THE SENSOR AND AT THE UNIT.
  - ADVANCE REMOTE PROBE SETTINGS:  
 REMOTE SENSORS MUST BE ENABLED IN THE MICRO CONFIGURATION LIST (SEE SERVICE MANUAL). CHANGE THE APPROPRIATE REMSN FROM "NOT INSTALLED" TO "INSTALLED".
  - DATA LOGGER CONFIGURATION:  
 REMOTE SENSORS MUST BE ENABLED IN DATA LOGGER TO RECORD ANY DATA (SEE SERVICE MANUAL). CHANGE THE APPROPRIATE REMSN FROM "OFF" TO "AVERAGE" OR "SNAPSHOT".



SENSOR NAME	CAVITIES TO USE
REMSN1	E & F
REMSN2	G & H
REMSN3	J & K



SYMBOL	REVISION RECORD	ENGRG.	DATE	APPLICATION ENGRG.	DATE	DRAWN BY	DATE
G	UPDT SHT INDEX; ADD SHT 4; SEE SHTS 2,3,4 FOR FURT DETAILS					DJD	04/01/05
F	UPDATED SHT. INDEX. ADDED NOTE PER IPCA72N2006P04-95.					ZMG	6/22/04
E	ADDED IT'S 70 AND 75, UPDATED NOTE 5.0 PER PCA72N249GP02.					ZMG	12/6/02

SUPERSEDES

TITLE

SEE SEPARATE PARTS LIST  
 INSTALLATION INSTRUCTIONS  
 REMOTE SENSOR/SWITCH KIT (ADVANCE)

SHEET INDEX	REV SHEET	G	G	G	G
	1	2	3	4	

DRAWING NO. 98-02344  
 SHEET 1 OF 3

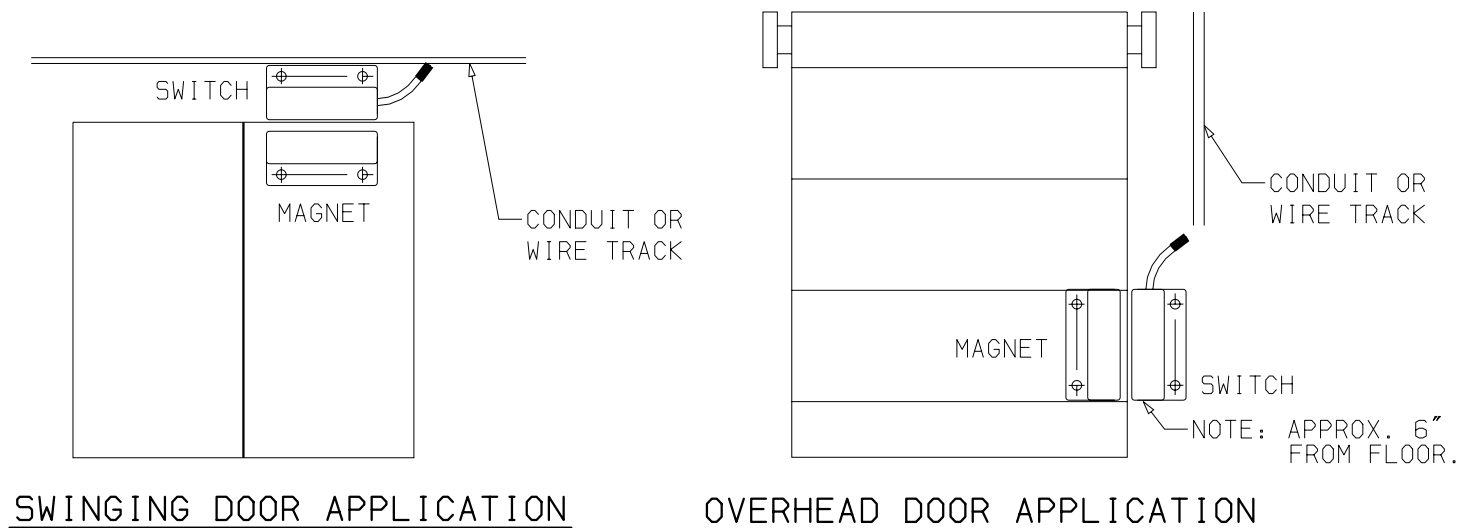
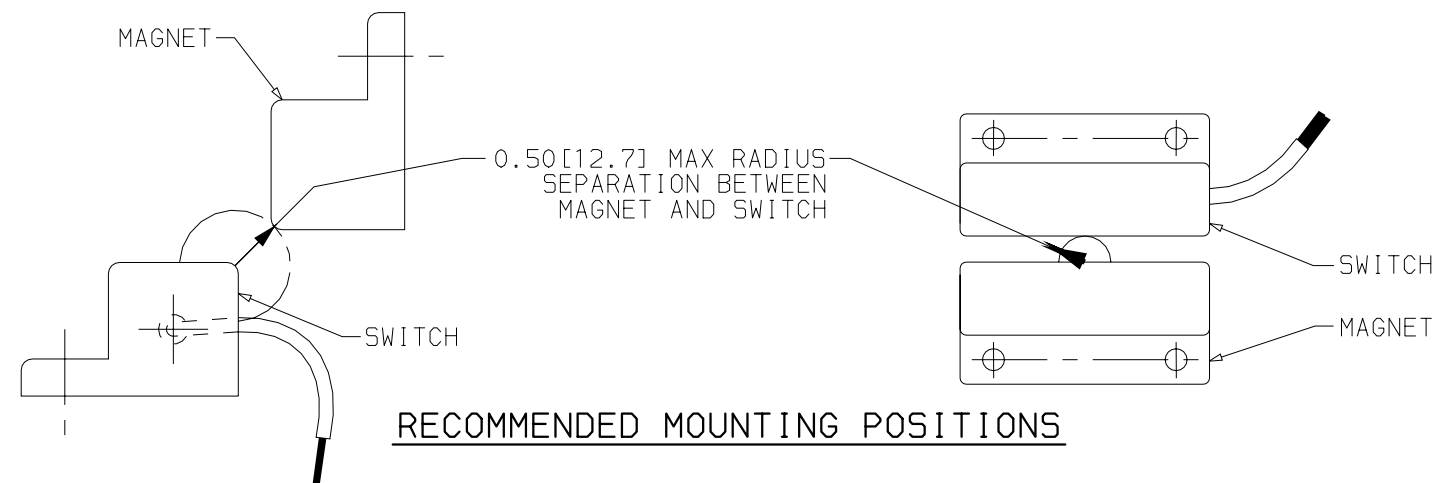
REV G



## REMOTE SWITCH INSTALLATION PROCEDURE

NDA, NDX ADVANCE MICRO UNITS

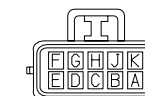
NOTE: INSTALLATION OF THIS REMOTE SWITCH KIT REQUIRES A 3/8" DIA HOLE TO BE DRILLED THROUGH THE NOSE OF THE TRAILER. THE TRAILER MANUFACTURER AND/OR CUSTOMER SHOULD BE CONSULTED PRIOR TO INSTALLATION FOR EXPLICIT INSTRUCTIONS ON THIS PROCEDURE TO AVOID AFFECTING THE TRAILER MANUFACTURER'S WARRANTY. THE CABLE MAY BE ROUTED INTO THE TRAILER THROUGH THE EVAPORATOR POD, HOWEVER, THIS WILL MAKE IT NECESSARY TO DISMOUNT THE ENTIRE CABLE INSIDE THE TRAILER SHOULD THE UNIT EVER NEED TO BE REMOVED.



- 1.0 INSTALL DOOR SWITCH AND MAGNET ON TRAILER DOORS (OR OTHER TYPE OF SWITCH).
- 2.0 CONNECT THE CABLE (ITEM 20) TO THE SWITCH USING SPLICE PROVIDED (ITEM 10). SHRINK THE INSULATION USING A HEAT GUN TO MAKE A SEALED CONNECTION. ROUTE THE CABLE FROM THE SWITCH TO THE 10-WAY CONNECTOR LOCATED NEAR THE CONTROL BOX ON THE UNIT. THIS WILL REQUIRE USING A 3/8" DIA HOLE IN THE FRONT WALL, PREFERABLY LOCATED IN THE AREA BEHIND THE CONTROL BOX, TO PASS THE CABLE THROUGH (SEE NOTE ABOVE) SO THAT THE EXCESS IS HANGING OUTSIDE THE FRONT OF THE TRAILER. USE SILICONE CAULK OR SIMILAR MATERIAL TO STABILIZE THE CABLE THROUGH THE WALL AND TO SEAL THE WALL AGAINST MOISTURE INTRUSION.
- 3.0 UNIT HARNESS CONNECTIONS:
  - 3.1 TO CONNECT SWITCH AS "DOOR SWITCH", LOCATE THE 2-WAY CONNECTOR, TIED TO THE MAIN WIRE HARNESS, UNDER THE ENGINE, WITH WIRES LABELED "DS-A" AND "DS-B". REMOVE THE MATING PLUG. REMOVE THE WIRE LOCK FROM THE PLUG AND DISCARD THE CAVITY PLUGS. INSERT THE TWO(2) WIRES (ITEM 18) INTO THE CAVITIES. BE SURE THAT THE PINS ARE ORIENTED CORRECTLY SO AS NOT TO DAMAGE THEM. YOU SHOULD FEEL/HEAR THEM CLICK INTO PLACE WHEN THEY ARE CORRECT. REPLACE THE WIRE LOCK AND PLUG INTO THE CONNECTOR.
  - 3.2 TO CONNECT THE SWITCH AS A "REMOTE SWITCH (REMS1 OR REMS2)", LOCATE THE 10-WAY CONNECTOR UNDER THE ENGINE, TIED TO THE MAIN WIRE HARNESS. REMOVE THE MATING PLUG. REMOVE THE WIRE LOCK FROM THE PLUG AND DISCARD THE CAVITY PLUGS FROM THE APPROPRIATE CAVITIES ACCORDING TO THE CHART BELOW. INSERT THE TWO(2) WIRES (ITEM 17) INTO THE NOW EMPTY CAVITIES OF THE MATING PLUG. BE SURE THAT THE PINS ARE ORIENTED CORRECTLY SO AS NOT TO DAMAGE THEM. YOU SHOULD FEEL/HEAR THEM CLICK INTO PLACE WHEN THEY ARE CORRECT. REPLACE THE WIRE LOCK AND PLUG INTO THE CONNECTOR.
- 4.0 CUT OFF EXCESS CABLE, THEN CAREFULLY STRIP BACK THE WHITE JACKET ABOUT 2". CAREFULLY TRIM OFF BRAID LEAVING ABOUT 0.25" EXPOSED. THEN USING SOLDER SLEEVE TERMINAL (ITEM.70) ATTACH GROUND WIRE (ITEM.75) TO EXPOSED BRAID WITH HEAT GUN. APPLY HEAT UNTIL SOLDER RING INSIDE SLEEVE MELTS AND FUSES WIRE AND SHIELD. USE THE SPLICE (ITEM 10) TO CONNECT THE FUSE HOLDER (ITEM 23) TO ONE OF THE CABLE WIRES. THEN USE THE REMAINING 2 SPLICES (ITEM 10) TO CONNECT THE SWITCH WIRES NOW INSERTED INTO THE MATING TWO(2) WAY OR 10-WAY PLUG. ONE TO THE OTHER END OF THE FUSE HOLDER AND ONE TO THE OTHER CABLE WIRE. IT IS IMPORTANT WHICH WIRES ARE CONNECTED TO THE FUSE HOLDER, FOR DOOR SWITCH CONNECT TO DS-A, FOR REMOTE SWITCH REMS1A OR REMS2B. SHRINK THE INSULATION USING A HEAT GUN.

NOTE: FOR MORE DETAILED INSTRUCTION ON INSTALLATION OF "SOLDER SLEEVE" SEE TECHNICAL INSTRUCTION 98-50179-00. THIS INSTRUCTION IS AVAILABLE ON THE CTD TRUCK/TRAILER REFERENCE LIBRARY.

SWITCH NAME	CAVITIES TO USE
REMS1	A & C
REMS2	B & D



- 5.0 ADVANCE REMOTE SWITCH SETTINGS:  
DOOR AND/OR REMOTE SWITCHES MUST BE ENABLED IN THE MICRO COFIGURATION LIST. (SEE SERVICE MANUAL). CHANGE THE APPROPRIATE CONFIGURATION FROM "NOT INSTALLED" TO "DOOR OPEN SWITCH ON".

## REMOTE DOOR SWITCH 98-02344-01

SYM	REVISION RECORD	ENGRG.	DATE	APPLICATION ENGRG.	DATE	DRAWN BY	DATE
G	MOVED UNIT HARNESS CONNECTION DRAWINGS TO SHT 3					DJD	04/01/05
F	ADDED INSTALLATION REFERENCE NOTE PER IPCA72N2006P04-95					ZMG	6/22/04
E	ADDED IT.70 AND 75, UPDATED NOTE 4.0 PER PCA72N249GP02.					ZMG	12/6/02

SUPERSEDES

TITLE

INSTALLATION INSTRUCTIONS  
REMOTE SENSOR/SWITCH KIT (ADVANCE)

DRAWING NO.

98-02344

REV

G

SHT 2 OF



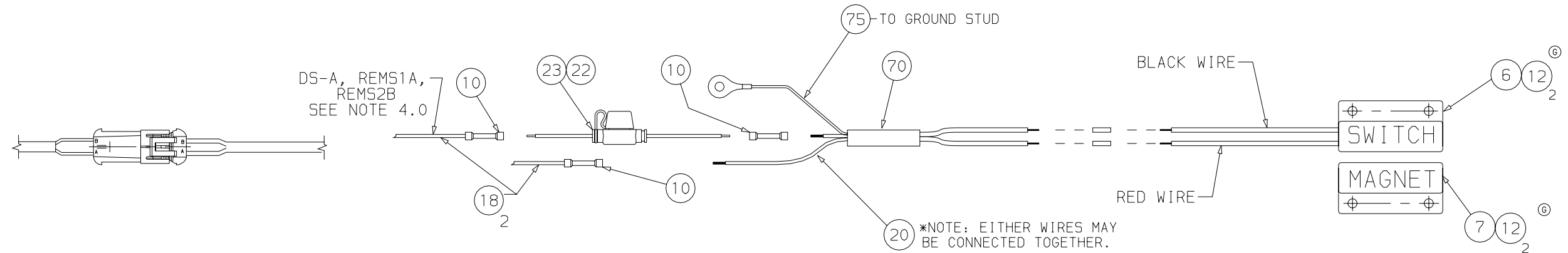
UNITED  
TECHNOLOGIES  
CARRIER  
TRANSCOLD

Carrier Transicold Division  
Carrier Corporation  
P.O. Box 4805  
Syracuse, New York 13221

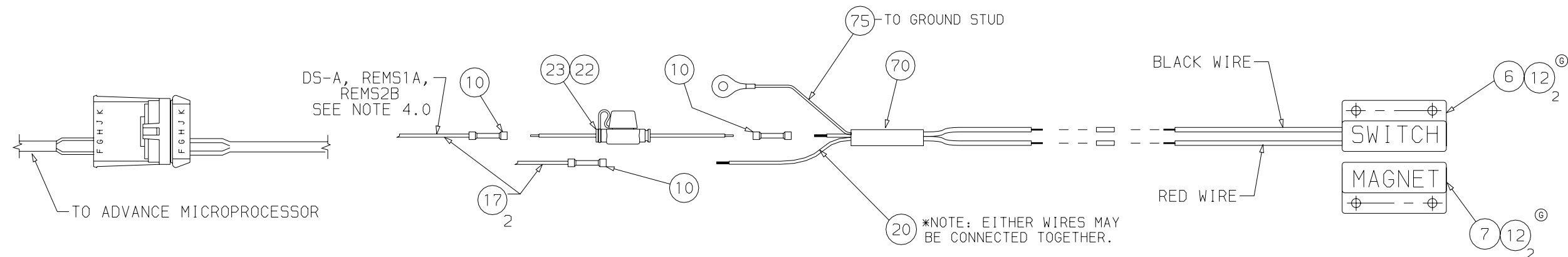
THIS DOCUMENT IS THE PROPERTY OF CARRIER CORPORATION  
AND IS DELIVERED UPON THE EXPRESS CONDITION THAT THE  
CONTENTS WILL NOT BE DISCLOSED OR USED WITHOUT CARRIER  
CORPORATION'S WRITTEN CONSENT.

SUBMISSION OF THESE DRAWINGS OR DOCUMENTS  
DOES NOT CONSTITUTE PART PERFORMANCE OR  
ACCEPTANCE OF CONTRACT

### 2 WAY CONNECTOR (SEE NOTE 3.1)<sup>6</sup>



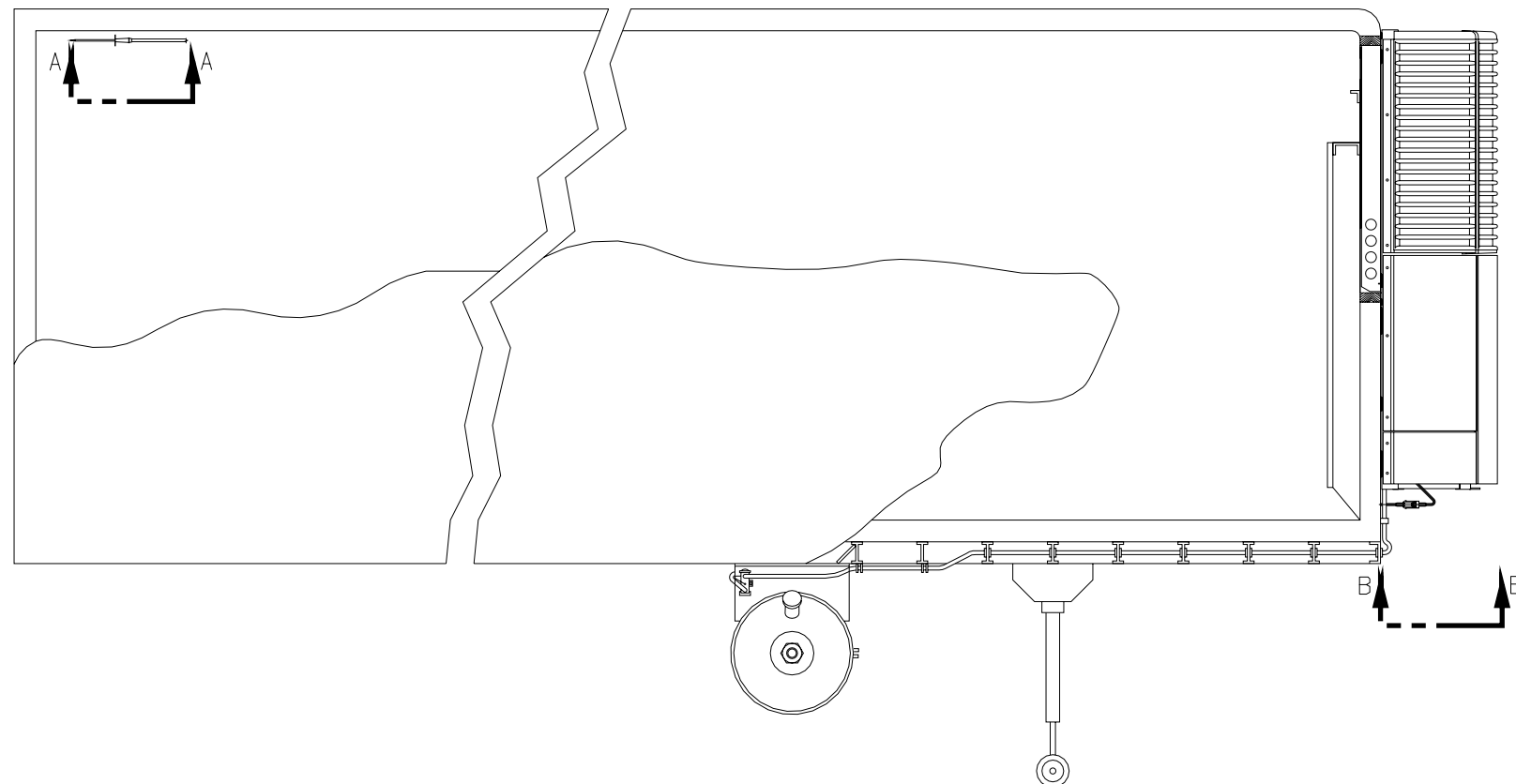
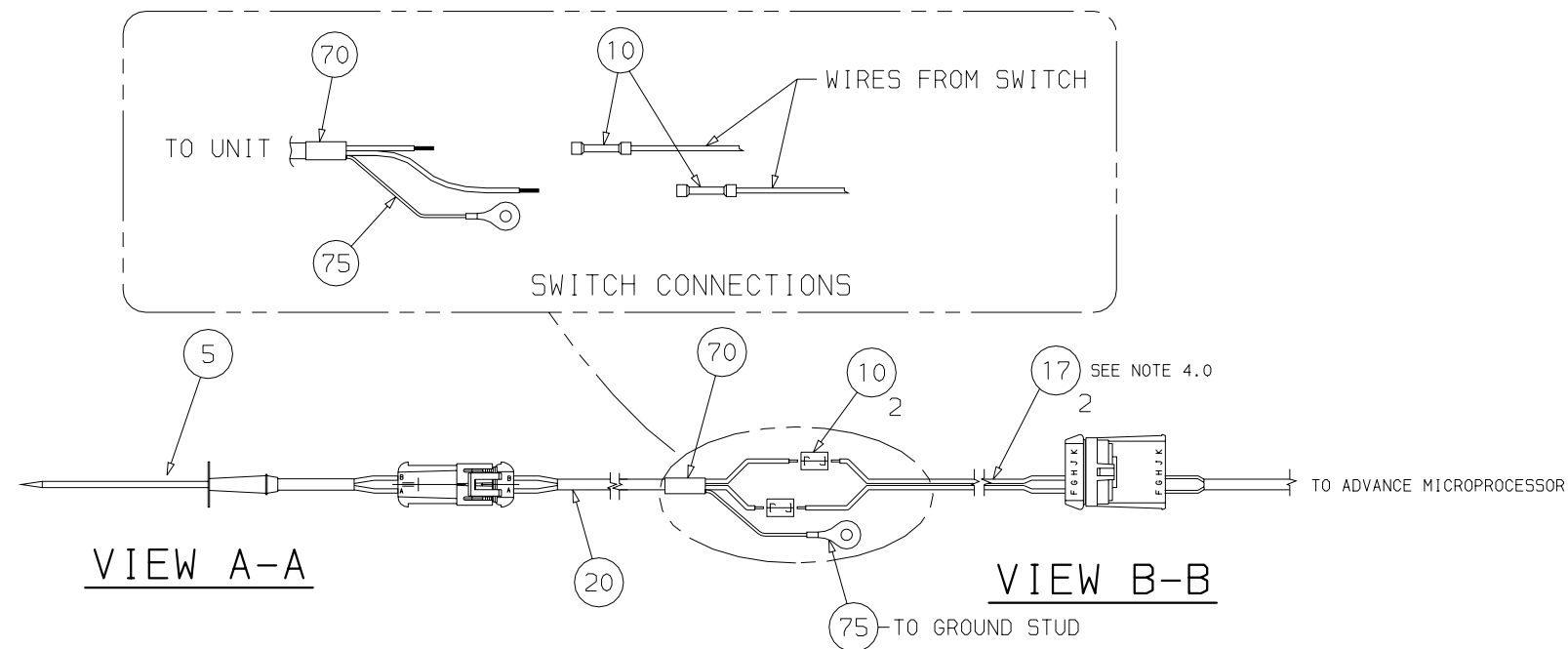
### 10 WAY CONNECTOR (SEE NOTE 3.2)



## REMOTE DOOR SWITCH 98-02344-01

SYM	REVISION RECORD	ENGRG.	DATE	APPLICATION ENGRG.	DATE	DRAWN BY	DATE
G	ADD BALLOON C/O 12; ADDED 2 WAY CON DETAIL; MOVED DETAILS FROM SHEET 2					DJD	04/01/05
F	ADDED INSTALLATION REFERENCE NOTE PER IPCA72N2006P04-95					ZMG	6/22/04
E	ADDED IT.70 AND 75, UPDATED NOTE 4.0 PER PCA72N249GP02.					ZMG	12/6/02

SUPERSEDES	TITLE	INSTALLATION INSTRUCTIONS REMOTE SENSOR/SWITCH KIT (ADVANCE)	DRAWING NO. 98-02344 SHT 3 OF	REV G
------------	-------	---	-------------------------------------	----------

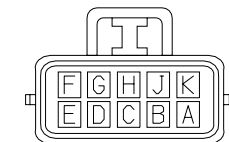


**REMOTE MONITOR SENSOR KIT**  
**98-02344-02**

NOTE: INSTALLATION OF THIS REMOTE SENSOR KIT REQUIRES A 3/8" DIA HOLE TO BE DRILLED THROUGH THE NOSE OF THE TRAILER. THE TRAILER MANUFACTURER AND/OR CUSTOMER SHOULD BE CONSULTED PRIOR TO INSTALLATION FOR EXPLICIT INSTRUCTIONS ON THIS PROCEDURE TO AVOID AFFECTING THE TRAILER MANUFACTURER'S WARRANTY. THE CABLE MAY BE ROUTED INTO THE TRAILER THROUGH THE EVAPORATOR POD, HOWEVER, THIS WILL MAKE IT NECESSARY TO DISMOUNT THE ENTIRE CABLE INSIDE THE TRAILER SHOULD THE UNIT EVER NEED TO BE REMOVED.

- 1.0 LOCATE THE SENSOR INSIDE OF TRAILER ACCORDING TO CUSTOMER SPECIFICATIONS.
- 2.0 ROUTE THE CABLE FROM THE SENSOR DIRECTLY TO THE ROAD-SIDE CEILING OF THE TRAILER. AFFIX THE CABLE USING THE CUSHION CLAMPS (ITEM 25) AND SELF THREADING SCREWS (ITEM 40). ROUTE THE CABLE ALONG THE CEILING AS CLOSE TO THE ROAD-SIDE CEILING/WALL AS POSSIBLE TO REDUCE THE POSSIBILITY OF DAMAGE, CLAMPING EVERY 2 TO 3 FT. ROUTE CABLE DOWN THE FRONT WALL TO NEAR THE FLOOR OF THE TRAILER.
- 3.0 DRILL A 3/8" DIA HOLE THROUGH THE FRONT WALL OF THE TRAILER, (SEE NOTE ABOVE), PREFERABLY THE AREA BEHIND CONTROL BOX FROM THE INSIDE OF THE TRAILER, PASS THE CABLE (ITEM 20) THROUGH THIS HOLE SO THAT THE EXCESS IS HANGING OUTSIDE THE FRONT OF THE TRAILER. USE SILICONE CAULK OR SIMILAR MATERIAL TO STABILIZE THE CABLE THROUGH THE WALL AND TO SEAL THE WALL AGAINST MOISTURE INTRUSION.
- 4.0 TO CONNECT REMOTE SENSOR TO THE ADVANCE MICROPROCESSOR DATARECORDER (NOTE: USE 2 REMOTE PROBE CONNECTORS WITH BARE TERMINALS, ITEM 17) THERE IS A 10-PIN CONNECTOR UNDER THE ENGINE TIED TO THE MAIN WIRE HARNESS. LOCATE THIS CONNECTOR AND REMOVE THE MATING PLUG. REMOVE THE WIRE LOCK FROM THE PLUG AND DISCARD THE CAVITY PLUGS FROM THE APPROPRIATE CAVITIES ACCORDING TO THE CHART BELOW. INSERT THE TWO WIRES FROM THE REMOTE SENSOR HARNESS INTO THE NOW EMPTY CAVITIES OF THE MATING PLUG. BE SURE THAT THE PINS ARE ORIENTED CORRECTLY SO AS NOT TO DAMAGE THEM. YOU SHOULD FEEL/HEAR THEM CLICK INTO PLACE WHEN THEY ARE CORRECT. REPLACE THE WIRE LOCK, AND PLUG IN THE CONNECTOR.

SENSOR NAME	CAVITIES TO USE
REMSN1	E & F
REMSN2	G & H
REMSN3	J & K



- 5.0 CUT OFF EXCESS CABLE, THEN CAREFULLY STRIP BACK THE WHITE JACKET ABOUT 2". CAREFULLY TRIM OFF BRAID LEAVING ABOUT 0.25" EXPOSED. THEN USING SOLDER SLEEVE TERMINAL (ITEM.70) ATTACH GROUND WIRE (ITEM.75) TO EXPOSED BRAID WITH HEAT GUN. APPLY HEAT UNTIL SOLDER RING INSIDE SLEEVE MELTS AND FUSES WIRE AND SHIELD. USE THE BUTT SPLICE (ITEM.10) TO CONNECT THE SENSOR CABLE TO THE REMOTE PROBE CABLE CONNECTOR. IT IS NOT IMPORTANT WHICH WIRES ARE CONNECTED TOGETHER. SHRINK THE TUBING USING A HEAT GUN. ATTACH RING TERMINAL TO GROUND STUD ON FRAME.

NOTE: FOR MORE DETAILED INSTRUCTION ON INSTALLATION OF "SOLDER SLEEVE" SEE TECHNICAL INSTRUCTION 98-50179-00. THIS INSTRUCTION IS AVAILABLE ON THE CTD TRUCK/TRAILER REFERENCE LIBRARY.

- 6.0 USE WIRE TIES (ITEM 55) PROVIDED TO TIE EXCESS CABLE OUT OF THE WAY AT THE SENSOR AND AT THE UNIT.
- 7.0 ADVANCE REMOTE PROBE SETTINGS: REMOTE SENSORS MUST BE ENABLED IN THE MICRO\_CONFIGURATION\_LIST (SEE SERVICE MANUAL). CHANGE THE APPROPRIATE REMSN FROM "NOT INSTALLED" TO "INSTALLED".
- 8.0 DATA LOGGER CONFIGURATION: REMOTE SENSORS MUST BE ENABLED IN DATA LOGGER TO RECORD ANY DATA (SEE SERVICE MANUAL). CHANGE THE APPROPRIATE REMSN FROM "OFF" TO "AVERAGE" OR "SNAPSHOT".

SYM	REVISION RECORD	ENGRG.	DATE	APPLICATION ENGRG.	DATE	DRAWN BY	DATE
G	MOVE REMOTE MONITOR SENSOR KIT TO SHEET 4					DJD	04/25/05
F	ADDED INSTALLATION REFERENCE NOTE PER IPCA72N2006P04-95					ZMG	6/22/04
E	ADDED ITEM 70 AND 75, REVISED NOTE 5.0 PER PCA72N249GP02.					ZMG	12/6/02
C	ADDED CALLOUT IT.20 PER IPCA72N2006P02-08.					ZMG	1/16/02

SUPERSEDES	TITLE	INSTALLATION INSTRUCTIONS REMOTE SENSOR/SWITCH KIT (ADVANCE/GOLD)	DRAWING NO. 98-02344 SHEET 4 OF	REV G
------------	-------	--	---------------------------------------	----------