



UNITED TECHNOLOGIES
CARRIER
TRANSCOLD

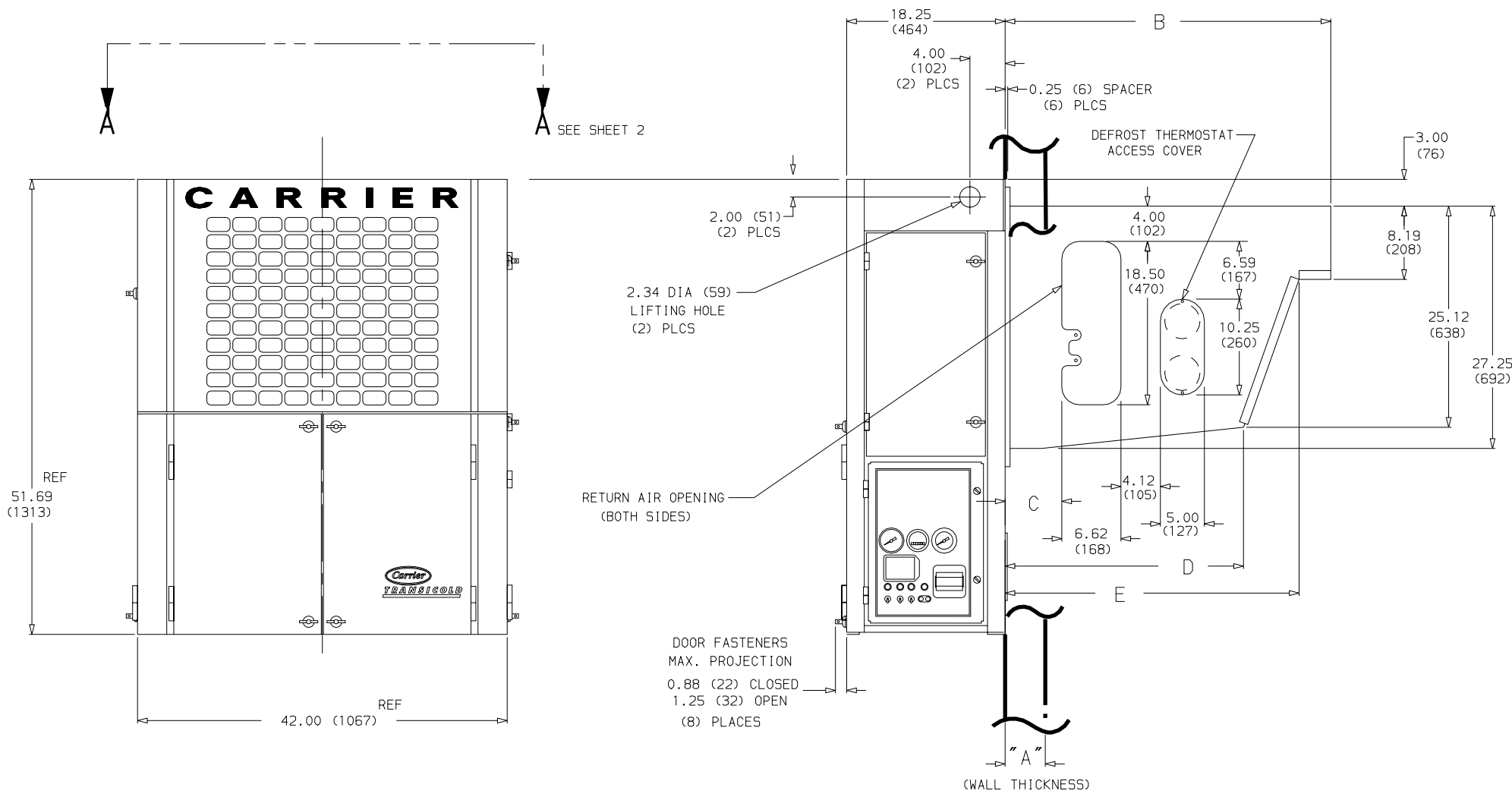
Carrier Transicold Division
Carrier Corporation
P.O. Box 4805
Syracuse, New York 13221

THIS DOCUMENT IS THE PROPERTY OF CARRIER CORPORATION AND IS DELIVERED UPON THE EXPRESS CONDITION THAT THE CONTENTS WILL NOT BE DISCLOSED OR USED WITHOUT CARRIER CORPORATION'S WRITTEN CONSENT.

SUBMISSION OF THESE DRAWINGS OR DOCUMENTS DOES NOT CONSTITUTE PART PERFORMANCE OR ACCEPTANCE OF CONTRACT

CROSS REFERENCE INDEX		
DESCRIPTION	INSTALLATION DRAWING NO.	KIT NO.
NEE SAFETY GUARDS	98-03172-00	76-00521-XX

PART NO.	MODEL DESCRIPTION
98-02208-01	STANDARD NEE (230V)
98-02208-02	MARINE NEE (230V)
98-02208-03	STANDARD NEE (460V)
98-02208-04	MARINE NEE (460V)



- NOTES:
- CARRIER TRANSCOLD PROVIDES CIRCLED ITEM NUMBERS AS PART OF REEFER UNIT INSTALLATION KIT SHIPPED WITH EACH UNIT.
 - CONSULT CARRIER TRANSCOLD SERVICE ENGINEERING FOR PROPER INSTALLATION OF OPTIONAL FEATURES NOT DETERMINED AS CARRIER SUPPLIED.
 - DIMENSIONS SHOWN ARE IN INCHES WITH EQUIVALENT MILLIMETERS IN CLOSED BRACKETS ().
 - WEIGHTS:
BASIC UNIT: 800 LB (363 Kg.)
 - THE TRAILER STRUCTURE MUST BE EVALUATED BY THE TRAILER MANUFACTURER TO DETERMINE ITS ABILITY TO WITHSTAND THE IMPOSED LOADS OVER ITS SERVICE LIFE. THESE GUIDELINES DO NOT CONVEY ENDORSEMENT OR WARRANTY BY CARRIER TRANSCOLD FOR THE STRUCTURAL INTEGRITY OF THE TRAILER.
 - CAUTION!
 - REFRIGERATION UNIT MUST BE SUPPORTED IN VERTICAL DIRECTION ACROSS FULL WIDTH OF EVAPORATOR PROJECTION. TRAILER MANUFACTURER OR INSTALLER TO ADD PERMANENTLY RETAINED SHIM MATERIAL AS REQUIRED.
 - PROPER INSTALLATION OF THE REFRIGERATION UNIT REQUIRES THAT THE FRONT WALL OF THE TRAILER BE AS FOLLOWS:
 - TRAILER SURFACES THAT CONTACT METAL PADS ILLUSTRATED ON SHEET 2 SHOULD BE PARALLEL WITHIN PLUS OR MINUS 1/8 INCH. THIS CAN BE VERIFIED BY PLACING A KNOWN STRAIGHT EDGE BETWEEN MOUNTING POINTS. SHIMS MAY BE REQUIRED TO PREVENT DISTORTION.
 - TRAILER SURFACE THAT COMES IN CONTACT WITH THE MAIN UNIT GASKET SHOULD NOT PROJECT MORE THAN 3/16 INCH ABOVE THE METAL PAD CONTACT AREAS. PROJECTIONS, DISTORTIONS OR BURRS ABOVE THIS HEIGHT SHOULD BE CALLED TO THE ATTENTION OF THE TRAILER MANUFACTURER FOR REMOVAL OTHERWISE A PROPER AIR SEAL CANNOT BE ASSURED.
 - RECOMMENDED TORQUE VALUES FOR FURNISHED LOCK NUTS ARE AS FOLLOWS:

BOLT/THREAD	TORQUE (FT-LBS)
1/2-13	60-EXCEPT AS NOTED
 - FOR NEE-430 MODELS DO NOT APPLY IN APPLICATIONS WHERE THE OUTDOOR AMBIENT TEMPERATURE CAN EXCEED 110°F (43.3°C).
 - UNIT CHECK OUT PER CARRIER FORM M4291 "PRE-DELIVERY CHECK LIST".

APPLICATION	MODEL	"A" DIM.	"B" DIM.	"C" DIM.	"D" DIM.	"E" DIM.	"F" DIM.
TRAILER/ WAREHOUSE	NEE-440__-NC NEE-430__-NC	4.00 (102)	37.00 (940)	6.50 (165)	27.06 (687)	33.38 (849)	2.34 (69)
WAREHOUSE	NEE-440__-NC-W NEE-430__-NC-W	8.00 (203)	40.34 (1025)	9.84 (250)	30.40 (772)	36.72 (933)	6.34 (161)
		12.00 (305)	44.34 (1126)	13.84 (352)	34.40 (874)	40.72 (1034)	10.34 (263)
		16.00 (406)	48.34 (1229)	17.84 (453)	38.40 (975)	44.72 (1136)	14.34 (364)

CONTENTS	SHEET
GENERAL INSTALLATION	1
UNIT DIMENSIONAL DATA	1
REEFER DRILLING DATA	2
SWING RADIUS	3
UNIT INSTALLATION	3
TRAILER PREPARATION	4
STANDBY PLUG INSTALLATION	5

SHEET INDEX	REV SHEET	D	A	D	A	C
	1	2	3	4	5	

D	ADDED MODEL NEE-430 TO CHART, CROSS REF CHART, MODEL CHART, AND NOTE 8; SEE SHEET 3, UPDATED SHEET INDEX.	PC729024G					DLD	06/11/99
C	UPDATED SHEET INDEX, SEE SHEET 5 PER PCA718209G.						MGC	7/17/98
SYM	REVISION RECORD		ENGRG.	DATE	APPLICATION ENGRG.	DATE	DRAWN BY	DATE

SUPERSEDES	TITLE	DRAWING NO.	REV
	INSTALLATION INSTRUCTION ELECTRA - MODEL NEE	98-02208	D

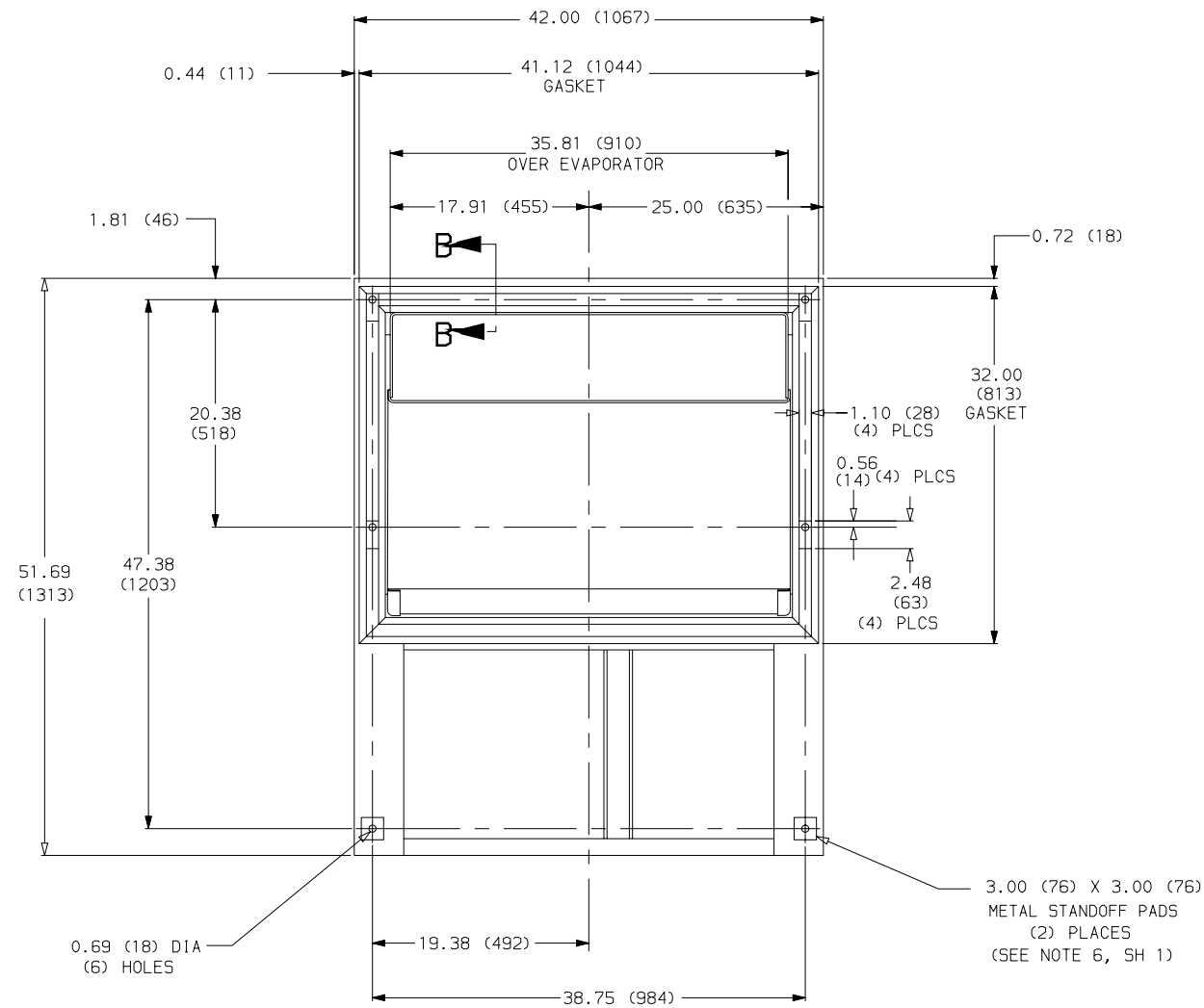


UNITED
TECHNOLOGIES
CARRIER
TRANSCOLD

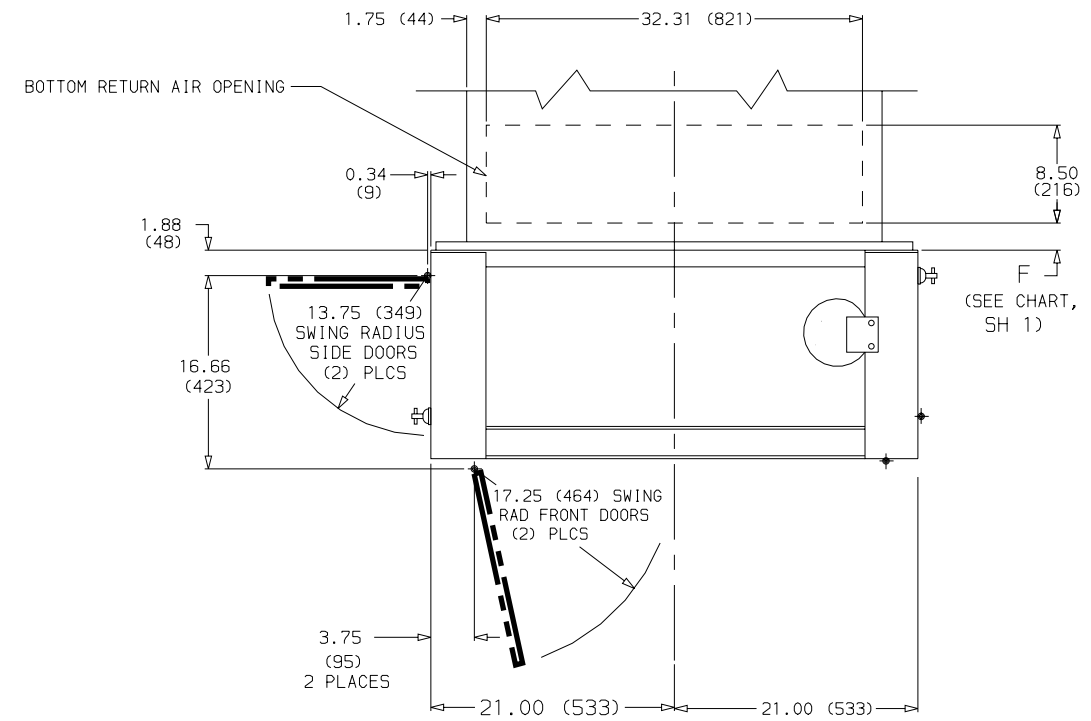
Carrier Transcold Division
Carrier Corporation
P.O. Box 4805
Syracuse, New York 13221

THIS DOCUMENT IS THE PROPERTY OF CARRIER CORPORATION
AND IS DELIVERED UPON THE EXPRESS CONDITION THAT THE
CONTENTS WILL NOT BE DISCLOSED OR USED WITHOUT CARRIER
CORPORATION'S WRITTEN CONSENT.

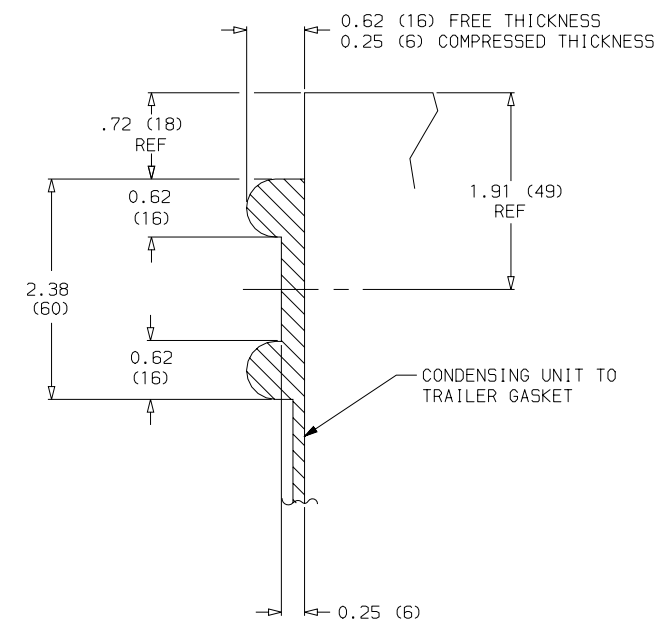
SUBMISSION OF THESE DRAWINGS OR DOCUMENTS
DOES NOT CONSTITUTE PART PERFORMANCE OR
ACCEPTANCE OF CONTRACT



REAR VIEW OF REEFER UNIT



VIEW A - A



SECTION B - B

REEFER UNIT TO TRAILER GASKET CROSS SECTION

A	UPDATED REVISION BLOCK. (1PCA727200G-60)				GMC	5-06-97
/	INITIAL RELEASE PER PCA607-3147				WJP	9-09-87
SYM	REVISION RECORD	ENGRG.	DATE	APPLICATION ENGRG.	DATE	DRAWN BY

SUPERSEDES

TITLE

INSTALLATION INSTRUCTIONS - STANDARD TRAILER
ELECTRA - MODEL NEE

DRAWING NO. 98-02208
SH 2 OF 2

REV A

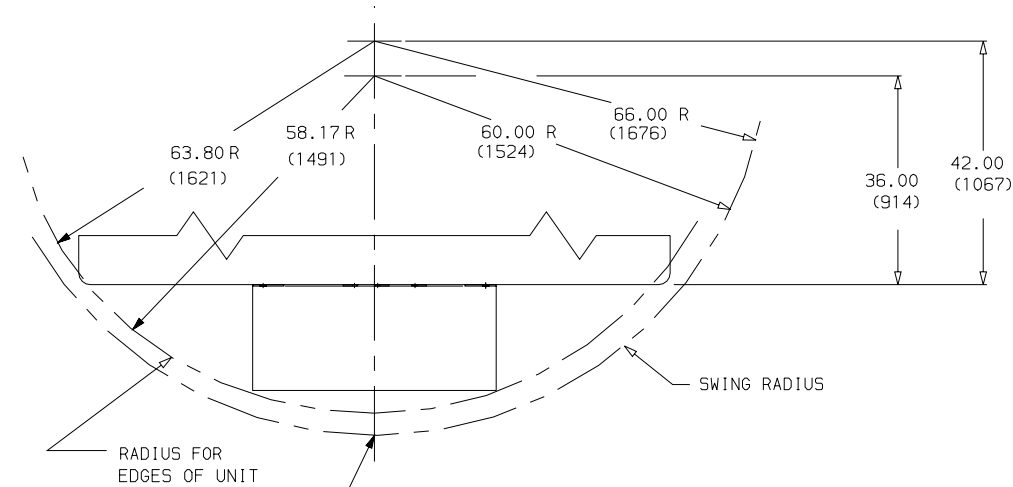


UNITED TECHNOLOGIES
CARRIER
TRANSCOLD

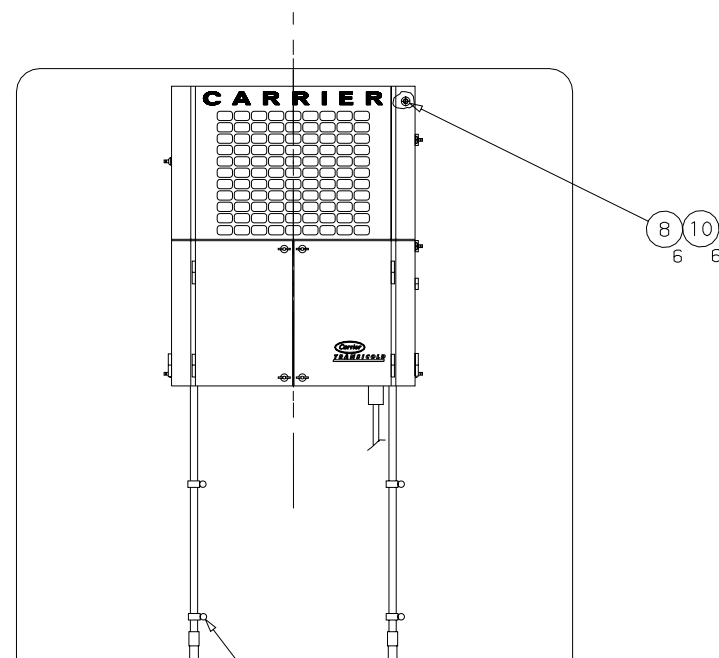
Carrier Transcold Division
Carrier Corporation
P.O. Box 4805
Syracuse, New York 13221

THIS DOCUMENT IS THE PROPERTY OF CARRIER CORPORATION AND IS DELIVERED UPON THE EXPRESS CONDITION THAT THE CONTENTS WILL NOT BE DISCLOSED OR USED WITHOUT CARRIER CORPORATION'S WRITTEN CONSENT.

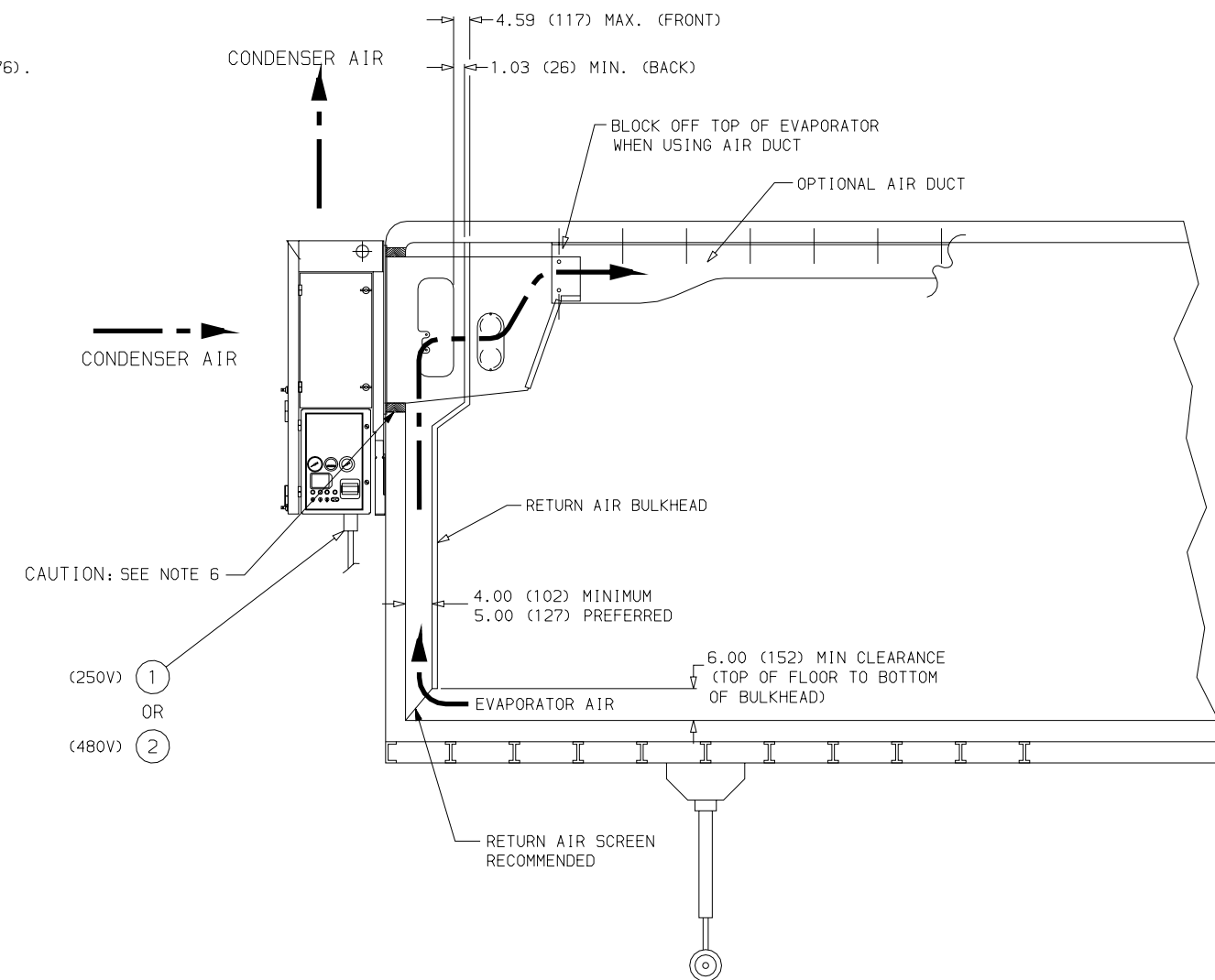
SUBMISSION OF THESE DRAWINGS OR DOCUMENTS DOES NOT CONSTITUTE PART PERFORMANCE OR ACCEPTANCE OF CONTRACT



FLUSH MOUNTING OF NOSE MOUNT UNIT ON TRAILER WITH A 36 INCH (914) KING PIN LOCATION REQUIRES SWING RADIUS OF 60 INCHES (1524) FOR CLEARANCE AND A 42 INCH (1067) KING PIN LOCATION REQUIRES SWING RADIUS OF 66 INCHES (1676).



6/4 12/4 DRAIN LINES SUPPLIED WITH REEFER UNIT, CUT TO SUIT. (DO NOT KINK OR OTHERWISE CLOSE DOWN TUBE I.D.)



CAUTION: SEE NOTE 6

(250V) 1
OR
(480V) 2

D	REMOVED BILL OF MATERIALS, NOTES FROM ITEMS 1 AND 2.	PCA7290246				DLD	06/22/99
B	IT.6 P/N: 34-01276-08 WAS 34-00349-12 PER PCA7172186.					ZMG	10/08/97
SYM	REVISION RECORD	ENGRG.	DATE	APPLICATION ENGRG.	DATE	DRAWN BY	DATE

SUPERSEDES

TITLE

INSTALLATION INSTRUCTION - STANDARD TRAILER
ELECTRA - MODEL NEE

DRAWING NO. 98-02208
SH 3 OF 3
REV D



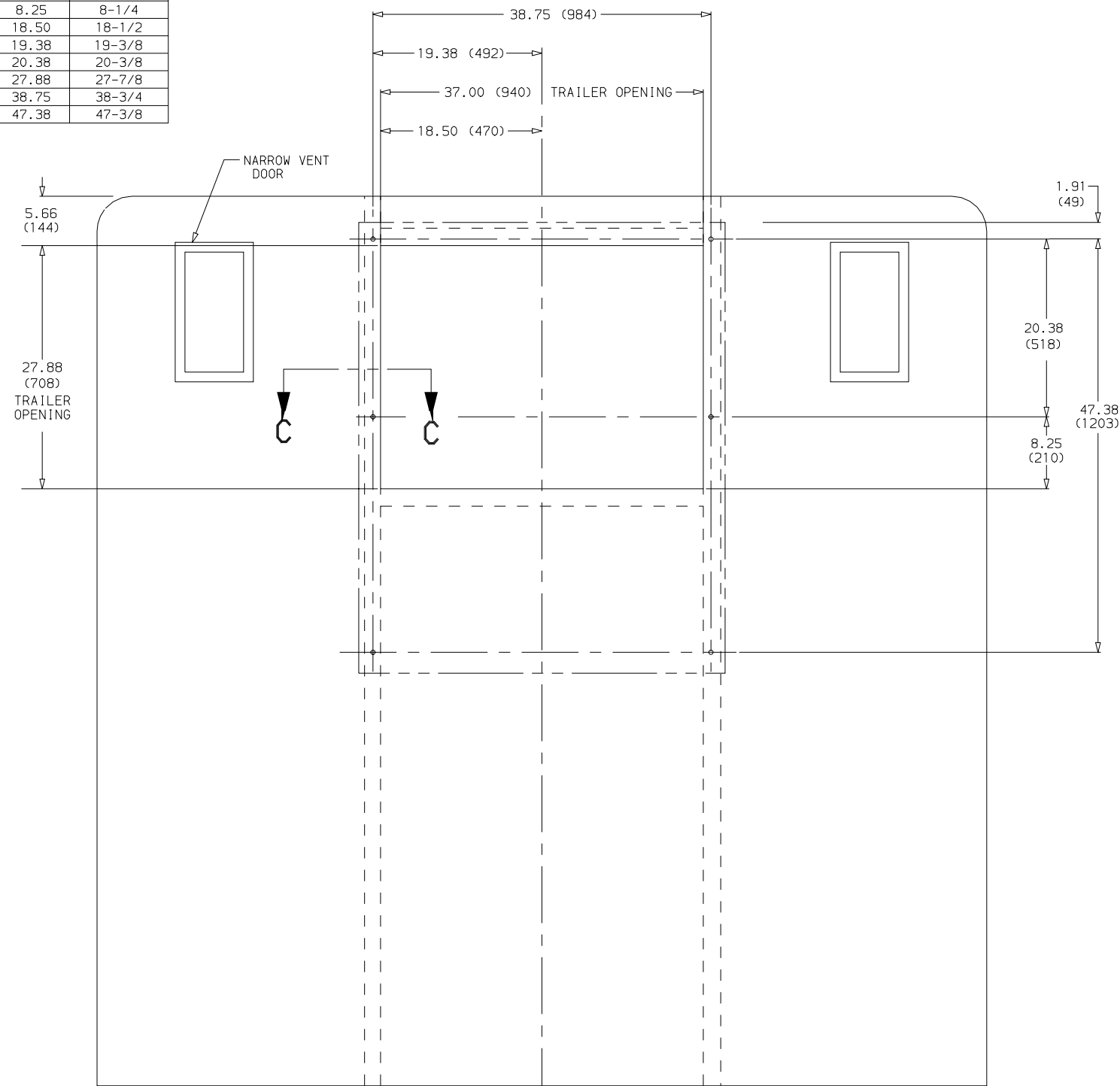
UNITED TECHNOLOGIES
CARRIER
TRANSCOLD

Carrier Transcold Division
Carrier Corporation
P.O. Box 4805
Syracuse, New York 13221

THIS DOCUMENT IS THE PROPERTY OF CARRIER CORPORATION AND IS DELIVERED UPON THE EXPRESS CONDITION THAT THE CONTENTS WILL NOT BE DISCLOSED OR USED WITHOUT CARRIER CORPORATION'S WRITTEN CONSENT.

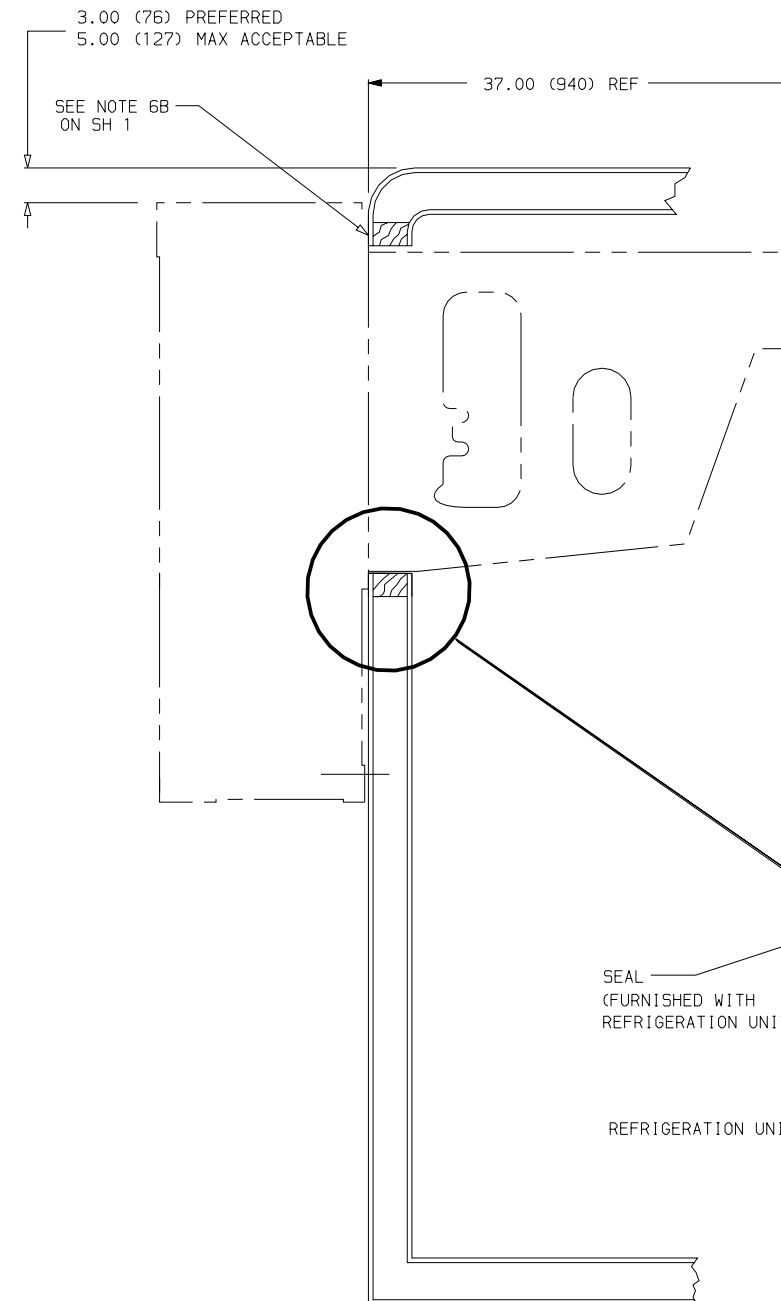
SUBMISSION OF THESE DRAWINGS OR DOCUMENTS DOES NOT CONSTITUTE PART PERFORMANCE OR ACCEPTANCE OF CONTRACT

DECIMAL INCHES	FRACTIONAL INCHES
1.50	1-1/2
1.91	1-29/32
5.66	5-21/32
8.25	8-1/4
18.50	18-1/2
19.38	19-3/8
20.38	20-3/8
27.88	27-7/8
38.75	38-3/4
47.38	47-3/8

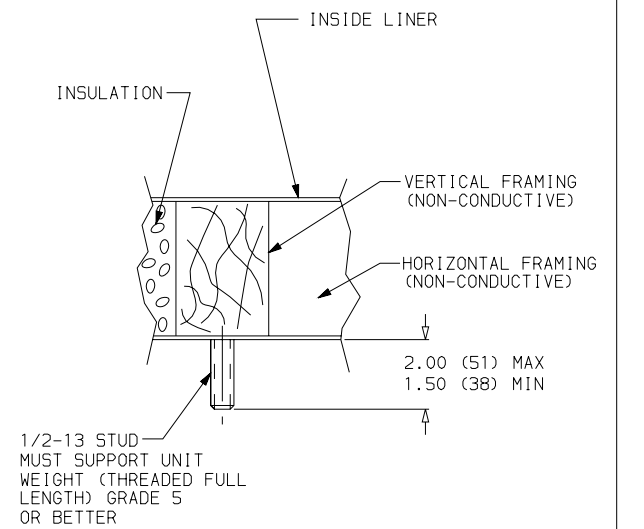


TRAILER FRONT VIEW

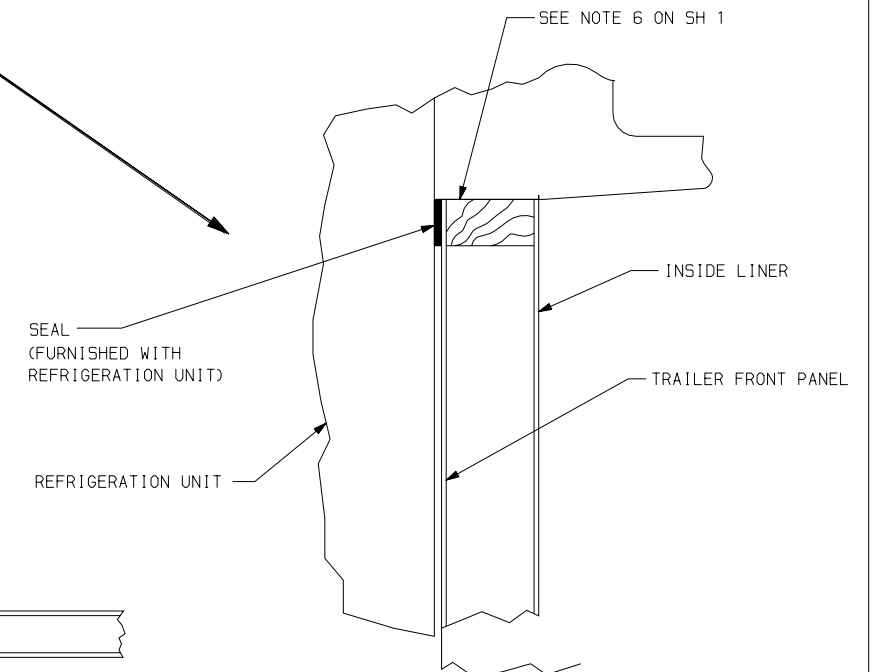
TRAILER PREPARATION



TRAILER SIDE VIEW



SECTION C - C



ENLARGED VIEW
SCALE: NONE

SYMBOL	REVISION RECORD	ENGRG.	DATE	APPLICATION ENGRG.	DATE	DRAWN BY	DATE
A	UPDATED REVISION BLOCK PER IPCA7272006-60.					GMC	5-06-97
/	INITIAL RELEASE PER PCA607-3147					WJP	9-9-87

SUPERSEDES

TITLE

INSTALLATION INSTRUCTIONS - STANDARD TRAILER
ELECTRA - MODEL NEE

DRAWING NO. 98-02208
SH 4 OF 4
REV A



VOLTAGE	Hz	PHASE	FULL LOAD AMP	LOCKED ROTOR AMP	POWER SUPPLY C.B. AMPS
230	60	3	35.6	191	70
460	60	3	17.8	86	40

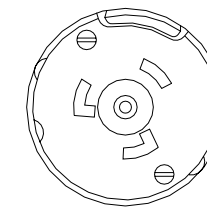
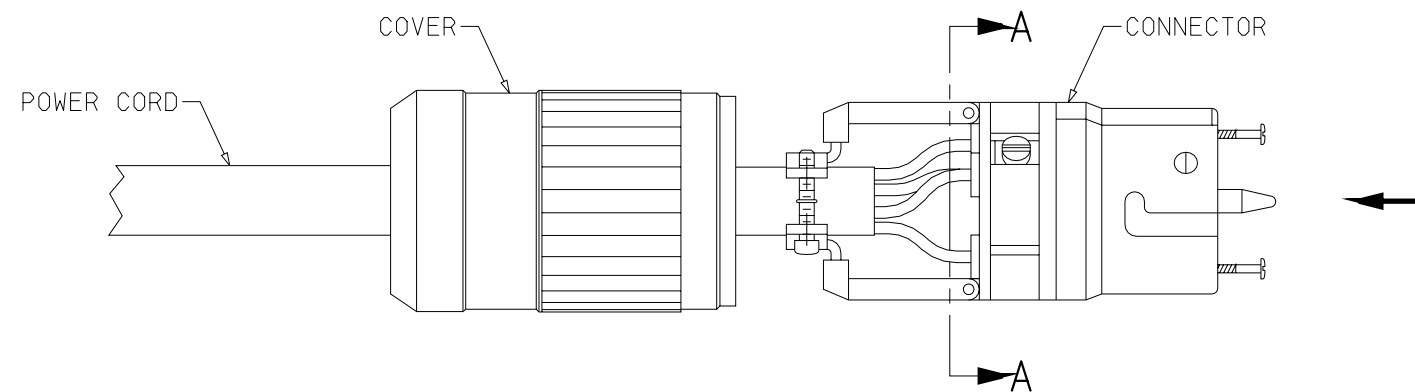
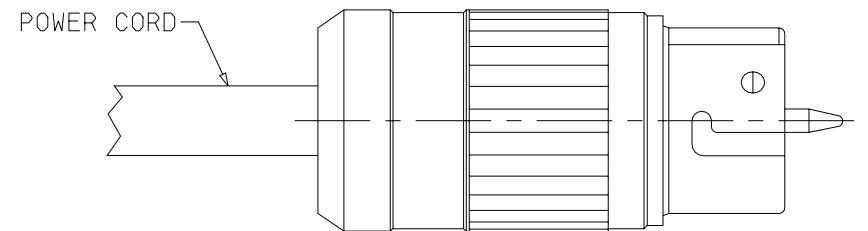
POWER CORD LENGTH/SIZE (GA)				
	25 FT	50 FT	75 FT	100 FT
208/230V	8 GA	8 GA	6 GA	6 GA
460V	10 GA	10 GA	10 GA	8 GA

STANDBY PLUG INSTALLATION

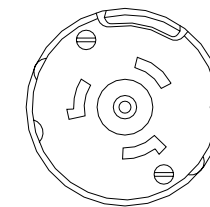
230V, 440V

MAKE CONNECTIONS TO PLUG AS SHOWN.

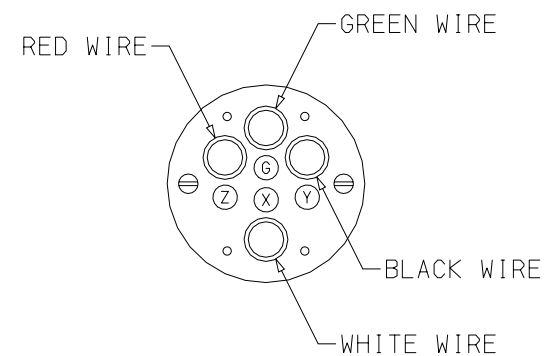
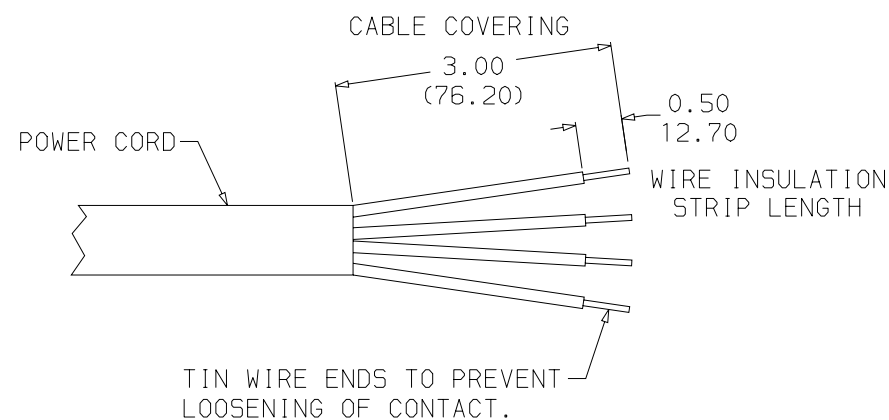
1. STRIP POWER CORD INSULATION BACK 3 INCHES.
2. CUT AWAY ANY PROTECTIVE PACKING FROM WIRES.
3. STRIP INSULATION OF WIRES BACK APPROXIMATELY 1/2 INCH.
4. TIN ENDS OF WIRE WITH ROSIN CORE (ELECTRICAL) SOLDER TO PREVENT FRAYING AND LOOSENING OF CONNECTION.
5. INSERT WIRE THRU THE COVER AS SHOWN.
6. INSERT WIRE ENDS INTO THE PLUG AS SHOWN IN DRAWING. IT IS IMPORTANT THAT THE GREEN WIRE IS CONNECTED TO THE SAFETY GROUND CONNECTION (MARKED GREEN) AT THE CENTER OF THE PLUG.
6. TIGHTEN CONNECTORS SECURELY AND ASSEMBLE THE PLUG.
7. WHEN TESTING THE OPERATION OF THE UNIT IN STANDBY MODE, ENSURE THAT THE ROTATION OF THE STANDBY MOTOR IS CORRECT. IF THE ROTATION IS NOT CORRECT, REVERSE THE CONNECTION OF ANY TWO OF THE THREE PHASE WIRES. "DO NOT REVERSE ANY WIRE WITH THE GREEN SAFETY GROUND."



230V



440V



SECTION A-A

SCALE: NONE

C	PIC'T REPLACED PLUG				MGC	07/17/98
A	NEW SHEET. (1PCA7272006 SHT.60)				GMC	5/06/97
SYM	REVISION RECORD	ENGRG.	DATE	APPLICATION ENGRG.	DATE	DRAWN BY DATE

SUPERSEDES

TITLE

INSTALLATION INSTRUCTIONS
ELECTRA - MODEL NEE

DRAWING NO. 98-02208
SHT. 5 OF 80

REV C