

Block Load v4.0 Screen Snapshots

Weather Data View

Block Load 4.00 [Manufacturing Office]

Project Edit View Reports Help

Manufacturing Office

- Weather
- Unattached Zones
- Systems
 - VAV Rooftop System
- Libraries
 - Walls
 - Roofs
 - Windows
 - Doors
 - External Shades

Region: USA

Location: Missouri

City: St. Louis IAP

Latitude: 42.0 deg Longitude: 87.9 deg

Elevation: 673.0 ft

Summer Design DB: 99.0 F

Summer Coincident WB: Min = 50.0, Max = 140.0

Summer Daily Range: 19.6 F

Winter Design DB: -6.0 F

Winter Coincident WB: -7.2 F

Atmospheric Clearness Number: 1.00

Design Clg Calculation Months: May thru Nov

Data Source: 2001 ASHRAE Handbook

Select Region 10/20/2005 7:16 AM

Zone Data View

Block Load 4.00 [Manufacturing Office]

Project Edit View Reports Help

Manufacturing Office

- Weather
- Unattached Zones
- Systems
 - VAV Rooftop System
 - 1 Conference Room
 - 2 Assistant manager
 - 3 Manager
 - 4 General Perimeter
 - 5 Chief Engineer
 - 6 Engineering
 - 7 General Core
- Libraries
 - Walls
 - Office Wall
 - Roofs
 - Office Roof
 - Windows
 - Office Window (6' x 2')
 - Doors
 - Double Doors (7x3.5) Glass
 - External Shades
 - Office Window Shade

General Internals Walls, Windows, Doors Roofs, Skylights Outdoor Airflow Floors Partitions

Overhead Lighting

Fixture Type: Recessed, Unvented

Wattage: 1.50 W/sqft

Unocc. Use: 10.0 %

People

Occupancy: 12.0 People

Activity Level: Office Work

Sensible: 245.0 BTU/hr/person

Latent: 205.0 BTU/hr/person

Unocc. Use: 0.0 %

Electrical Equipment

Wattage: 0.35 W/sqft

Unocc. Use: 10.0 %

Miscellaneous Loads

Sensible: 0.0 BTU/hr

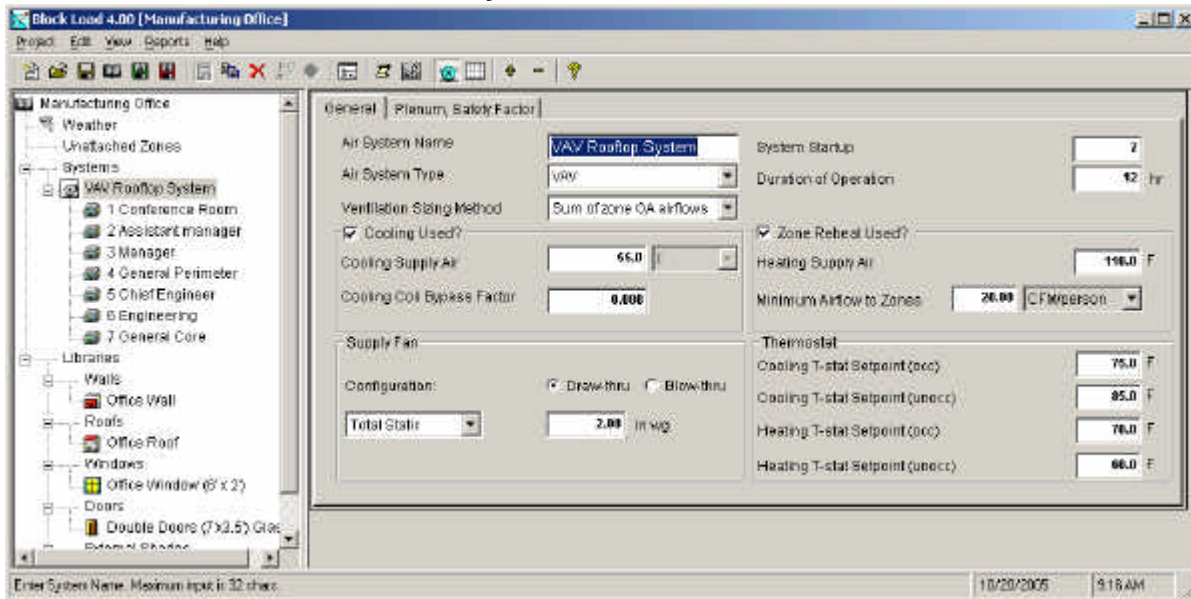
Unocc. Sensible Use: 0.0 %

Latent: 0.0 BTU/hr

Unocc. Latent Use: 0.0 %

Ready 10/20/2005 9:14 AM

System Data View



Spreadsheet Style Data Editing

Spreadsheet View

Zones

- General
- Internals
- Walls, Windows, Doors
- Roofs, Skylights
- Outdoor Airflow
- Floors
- Partitions

Filter

Show Zones for System...: All

| Zone Name | 1 Conference Room | 2 Assistant manager | 3 Manager | 4 General Perimeter |
|--------------------|-------------------|---------------------|-----------|---------------------|
| AreaSpec | Dimension | Dimension | Dimension | Dimension |
| Floor Area(sqft) | 375.0 | 225.0 | 300.0 | 1050.0 |
| Length(ft) | 25.0 | 15.0 | 20.0 | 70.0 |
| Width(ft) | 15.0 | 15.0 | 15.0 | 15.0 |
| Avg Ceiling Ht(ft) | 8.5 | 8.5 | 8.5 | 8.5 |
| Building Wt | Medium | Medium | Medium | Medium |